

KOPER^k

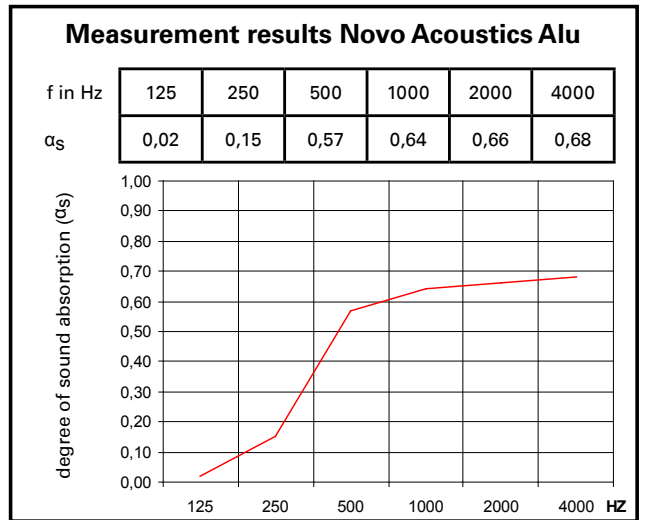


Novo Acoustics Alu

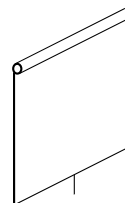
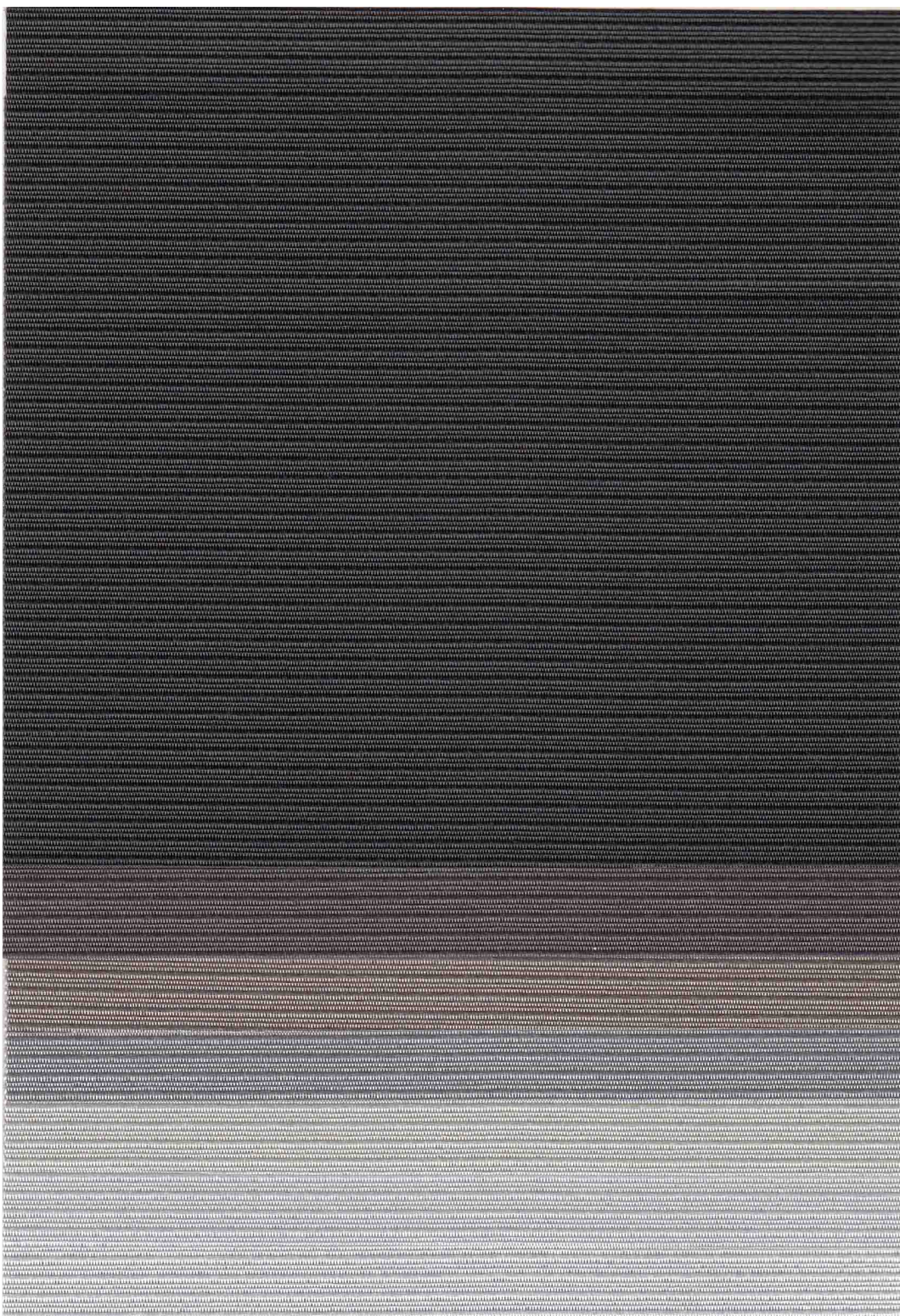
Sound absorption: The sound absorption coefficient (α_s) is the ratio of absorbed sound energy to the sound energy occurring. Tested in audible range of 125 - 4000 Hz.

α_w : A range of noise reduction values is combined into a single „alpha w“ value with the aid of a curve fitting process as set out in EN ISO 11654.

NRC: The „Noise Reduction Coefficient“ indicates the level of noise reduction as defined by the average sound absorption level at 250, 500, 1000 and 2000 Hz.



Novo Acoustics Alu



40974

10238
Rich Black

10236
Charcoal

10235
Dusty Fawn

6555
New York Grey

6541
Ivory

6554
Grey Haze

6557
Snow

Novo Acoustics Alu combines refined textile character with technically sophisticated functionality. The Trevira CS fabric has very good sound-absorbing properties, and is therefore ideally suitable for creating a pleasant room atmosphere. The elegant ribbed texture conveys great aesthetic appeal – exactly right for high-quality furnishings and the exacting home environment. The aluminium-vapour coated fabric reflects incoming sunbeams particularly effectively and ensures comfortable room temperatures during the summer months.

Technical specification

Article		Novo Acoustics Alu 40974
Basic material		100% polyester (Trevira CS)
Width		240 cm
Weight approx.		155 g/m ²
Thickness approx.	EN ISO 5084	0,37 mm
Sound absorption	EN ISO 11654 / ASTM C423	$\alpha_w = 0,45$ NRC = 0,45
Fire retardancy		B1* / M1 / C1* / BS* / B-s1,d0**/ NFPA 701TM#1*
Transparency degree		semi-transparent
Suitable for office environment (according to light-transmission)	EU-90/270	yes
Suitable for moist atmosphere		no
Moisture shrinkage (%)	DIN 53892 B2	warp: < 0,5 weft: < 0,5
Light fastness (window side)	EN ISO 105-B02	≥ 6-7 (alu-side)
Rubbing fastness	EN ISO 105-X12	≥ 4 depending on colour (alu ≥ 3)
Tensile strength Determination of max. force Elongation at max. force	EN ISO 13934-1	warp: > 110 daN weft: > 50 daN warp: > approx. 32% weft: > approx. 18%
Manufacturing guidance		to cut with cold knife, non-railroading (fabric length for drop)
Roll length approx.		40 m
Care instruction		vacuum cleaning

Solar values

Colour	OF	acc. to EN 410							acc. to EN 13363-1/ EN 14501				acc. to ASHRAE 74-1988	
		Visible light (380 - 780 nm)			Solar radiation (300 - 2500 nm)			g-value	Double glazing <small>g window=0,75 U window=3,0</small>		Thermocoated double glazing <small>g window=0,7 U window=1,6</small>		1/8" Clear glass	1/4" Heat absorbing glass
		T%	R%	A%	T%	R%	A%		g-total	Fc-value	g-total	Fc-value		
10238	1	1	58	41	3	61	36	0,13	0,38	0,51	0,39	0,55	0,38	0,32
10236	1	1	58	41	4	61	35	0,13	0,38	0,51	0,39	0,56	0,40	0,33
10235	1	2	62	36	4	63	33	0,13	0,37	0,50	0,38	0,54	0,38	0,32
6555	1	3	62	35	5	63	32	0,13	0,37	0,50	0,38	0,54	0,38	0,32
6541	1	6	62	32	6	63	31	0,14	0,37	0,50	0,38	0,54	0,37	0,31
6554	1	6	61	33	7	62	31	0,15	0,38	0,51	0,39	0,55	0,38	0,32
6557	1	7	62	31	7	63	30	0,15	0,38	0,50	0,38	0,54	0,36	0,31

* confirmed by Trevira GmbH

** permits the classification into the category M1

All specifications are based on average values and may deviate within the standard tolerance limits.
Subject to technical modifications.

