

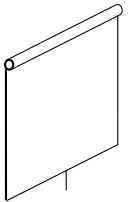
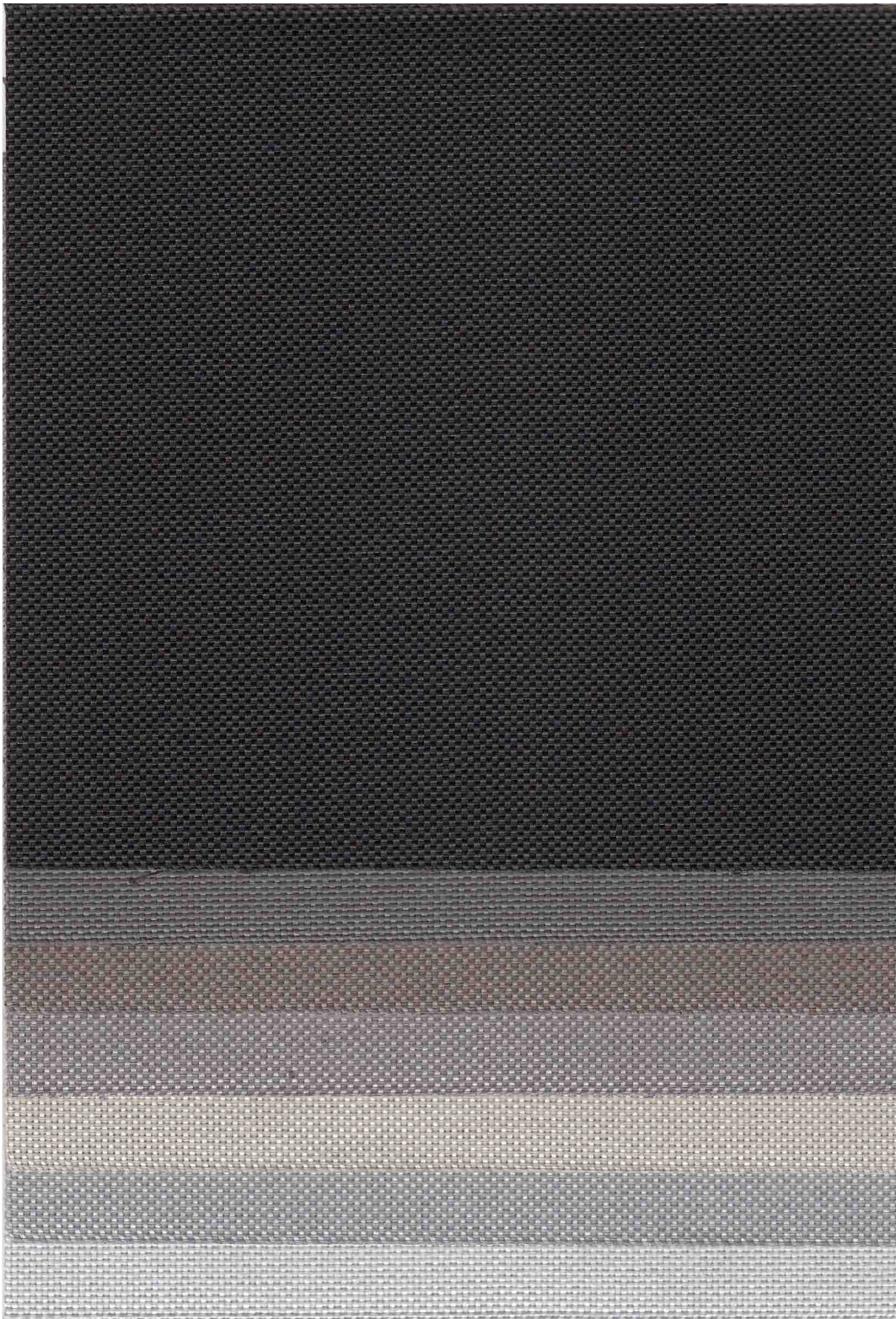
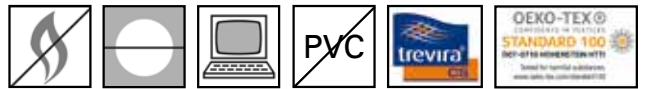
KOPER k

Silkshade D Alu



www.kopershades.com

Silkshade D Alu



401020

7172
Rich Black

7183
Hot Stone

7174
Dusty Fawn

7184
Cashmere

10025
Ivory

10042
Grey Haze

7169
Snow

Silkshade D Alu is a textile, PVC-free screen fabric. The grid-like fabric structure guarantees to prevent invasion of privacy from people looking in and at the same time prevents glare occurring whilst still allowing a view of the outside. The aluminium-vapour coated fabric reflects incoming sunbeams particularly effective and ensures comfortable room temperatures during the summer months.

Technical specification

Article		Silkshade D Alu 401020
Basic material		100% polyester (Trevira CS)
Width		290 cm
Weight approx.		160 g/m ²
Thickness approx.	EN ISO 5084	0,37 mm
Fire retardancy		B1 / C1 / M1* / B-s1,d0**
Transparency degree		transparent
Suitable for office environment (according to light-transmission)	EU-90/270	yes
Suitable for moist atmosphere		no
Moisture shrinkage (%)	DIN 53892 B2	warp: < 0,5 weft: < 0,5
Light fastness (window side)	EN ISO 105-B02	≥ 5 coloured side (alu: ≥ 6-7)
Rubbing fastness	EN ISO 105-X12	≥ 4 depending on colour (alu: ≥ 3)
Tensile strength Determination of max. force Elongation at max. force	EN ISO 13934-1	warp: > 95 daN weft: > 60 daN warp: > 25% weft: > 25%
Manufacturing guidance		to cut with ultrasonic knife, non-railroading (fabric length for drop)
Roll length approx.		40 m
Care instruction		brush off, vacuum cleaning

Solar values

Colour	OF	acc. to EN 410							acc. to EN 13363-1/ EN 14501				acc. to ASHRAE 74-1988	
		Visible light (380 - 780 nm)			Solar radiation (300 - 2500 nm)			g-value	Double glazing <small>g window=0,75 U window=3,0</small>		Thermocoated double glazing <small>g window=0,7 U window=1,6</small>		1/8" Clear glass	1/4" Heat absorbing glass
		T%	R%	A%	T%	R%	A%		g-total	Fc-value	g-total	Fc-value		
7172	3	3	54	43	5	57	38	0,15	0,40	0,54	0,41	0,58	0,40	0,32
7183	3	4	54	42	6	57	37	0,16	0,40	0,54	0,41	0,58	0,40	0,33
7174	3	4	59	37	6	61	33	0,14	0,38	0,51	0,39	0,56	0,38	0,32
7184	3	4	57	39	6	58	36	0,15	0,40	0,53	0,40	0,58	0,40	0,32
10042	3	6	59	35	7	56	37	0,16	0,41	0,55	0,41	0,59	0,41	0,33
10025	3	7	54	39	6	57	37	0,15	0,40	0,54	0,41	0,58	0,40	0,33
7169	3	9	58	33	9	58	33	0,18	0,40	0,54	0,40	0,58	0,40	0,33

* confirmed by Trevira GmbH

** permits the classification into the category M1

All specifications are based on average values and may deviate within the standard tolerance limits.
Subject to technical modifications.

