

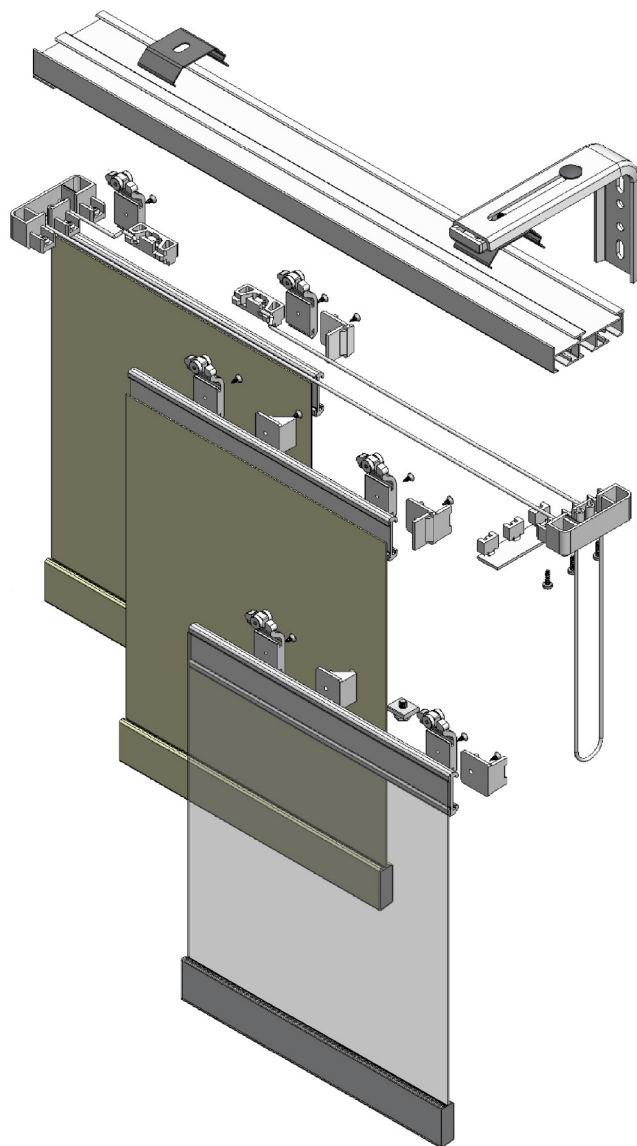
Sliding Panels System

SPECIFICATIONS

- Powder coated aluminum profile - white color
- Size: 5-channel 87.4 x 16.2 mm | 3-channel 51 x 16.2 mm
- Thickness: 1 mm
- Length: 6 m
- Maximum recommended weight: 1.25 kg/carrier & 12 kg/blind

FEATURES

- Modern alternative to standard curtains
- Also used as partitions, sliding doors or wall decorations
- Available in 3 channels & 5 channels track system
- Panels can be linked to move together or unlinked to move freely
- Panels are positioned one behind another when the blind is open
- They can be operated by cord, by rod or by hand

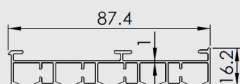


TRACK

3-CHANNEL



5-CHANNEL

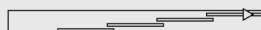


STACK OPTIONS

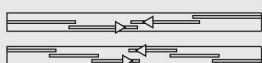
RIGHT OR LEFT 3-channel



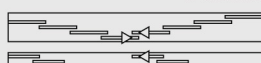
5-channel



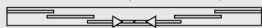
SPLIT 3-channel



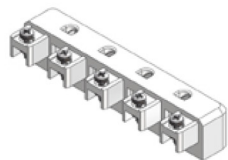
5-channel



(without overlap : the lead panels running in the same channel)



MAIN COMPONENTS



5-Channel End Cap



3-Channel End Cap



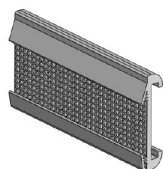
Carrier (with screw)



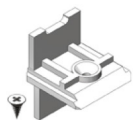
Rod Holder



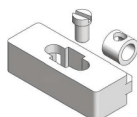
White Aluminum Rod
(36" - 48" - 60" - 69")



Sliding Velcro Profile



Stopper (T type)



Cord Connector
(with "O" ring & screw)



5-Channel Ceiling Clip



3-Channel Ceiling Clip