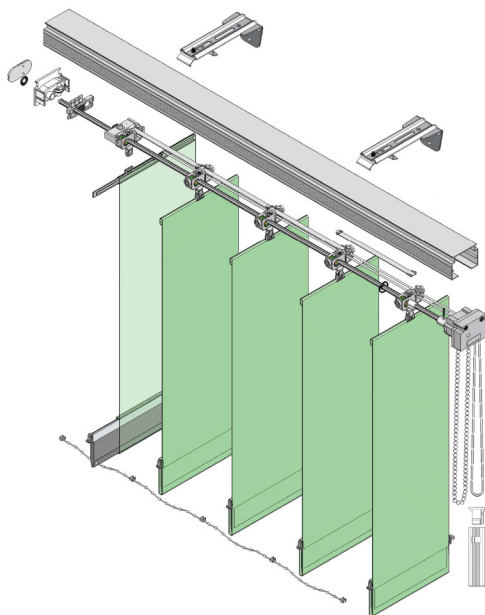


V1000 Vertical Blind Track



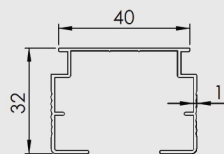
SPECIFICATIONS

- Powder coated aluminum profile - white color
- Size: 40 x 32 mm
- Thickness: 1 mm
- Length: 6 m
- Maximum recommended weight:
0.8 kg/carrier & 20 kg/blind

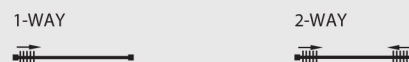
FEATURES

- 89mm & 127mm fabric louvers
- The louvers can be rotated through 180 degrees to control light levels
- They can be drawn to the side offering a clearer view
- Easy installation brackets for wall & ceiling
- Manual operation by cord for traversing & by bead chain for rotation

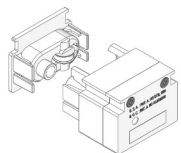
TRACK



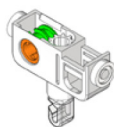
OPERATIONAL DIRECTION



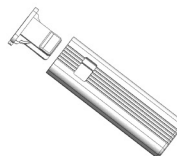
MAIN COMPONENTS



Control Unit
(with aluminum drive)



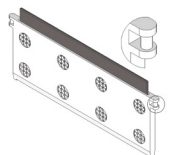
Carrier
(J hook - Metal spacer)



Cord Weight
(with metal inside - total 110 g)



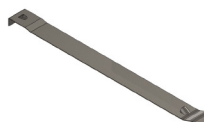
Wall Mounting Bracket
with Ceiling Clip (zinc)



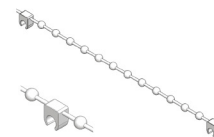
Pocket Bottom Weight
(plastic with steel inside)



Metal Slat Hanger



Stainless Steel Spacer



C Type Linking Chain
(ball diameter 3mm)