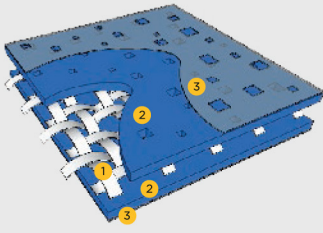


OUTDOOR TECHNICAL FABRICS

KOPER 



1. Base Cloth
2. Primer Coating
3. PVDF Exterior Coating

Base Cloth

A woven base cloth of high tenacity polyester yarns is the base material to provide the Tear Strength, Tensile Strength and Dimensional Stability on the finished product.

Primer Coating

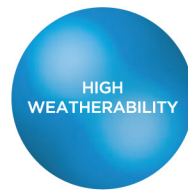
The PVC coating impregnates the base cloth to enhance the impressive Dimensional Stability, high Tensile Strength, high Elongation Rupture and high Tear Strength.

PVDF Exterior Coating

Applying PVDF Exterior Coatings on the surface generates the maximum protection against atmospheric chemical, microbial and fungal attacks, and also becoming weather resistance to Ultra Violet Radiation, Rain and Abrasion

Technical Properties	Standards	Result
Openness Factor		7%
Width		250 cm
Color Fastness to Light	ISO 105:B04	8
Tensile Strength	ISO 1421	Warp: 250 daN/5cm ±5% Weft: 290 daN/5cm ±5%
Tear Strength	ISO 4674	Warp: 20.1 daN ±5% Weft: 8.5 daN ±5%
Weight	ISO 2286-2	350 g/m ² ±5%
Thickness	ISO 2286-3	0.46 ±5%
Fire Retardancy	NFPA 701-2010	Pass

HIDDEN STRENGTH



KEY ADVANTAGES



5 YEAR WARRANTY



EASY MAINTENANCE - PVDF COATING



COST EFFICIENCY



FLAME RETARDANT



LIGHT WEIGHT



LONGEVITY



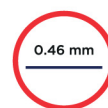
UV RESISTANCE



THERMAL COMFORT



MOULD RESISTANCE



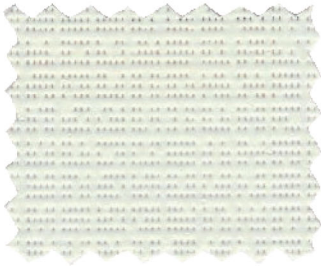
THINNESS



NON TOXIC HEAVYMETAL FREE

7% OPENNESS FACTOR

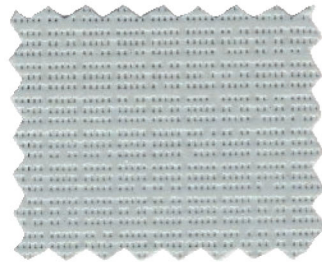
COLOR CHART



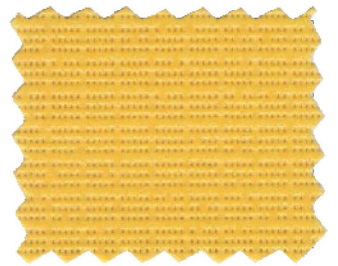
1303 | NATURAL WHITE



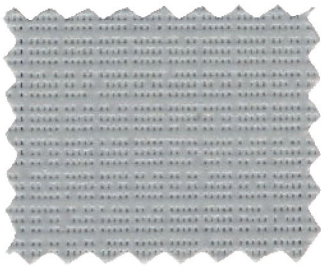
0104 | POINSETTIA RED



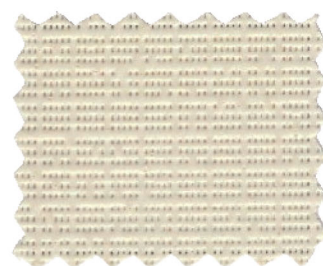
1612 | SMOKE GREY



0502 | YELLOW SUNSET



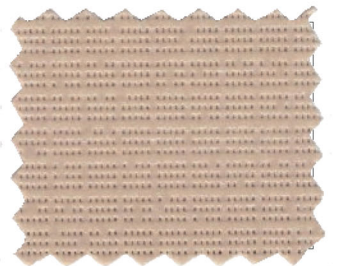
1608 | FINE SILVER



1407 | FRENCH CREAM



1002 | SUNSHINE



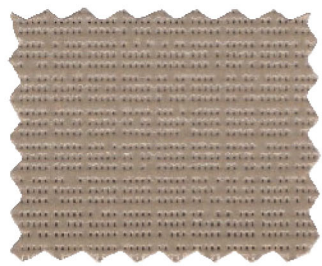
1800 | LIGHT TAUPE



1613 | SEAL GREY



0300 | BURGUNDY



1801 | WOODROOF



1609 | NIGHT SKY



2303 | HUNTER GREEN



1802 | DARK TAUPE



0903 | DEEP ONYX



1205 | BLAZER BLUE

CARE

INSTRUCTIONS

STORAGE INSTRUCTION

1. To prolong the lifespan of the fabric, the fabric rolls should be place horizontally in a cool environment.
2. Fabric should not be piled up to avoid line marks.
3. Fabric should always be handled in a clean area with clean hands and equipment.

CARE INSTRUCTION

1. Dust can be removed from the fabric by vacuum cleaning or soft duster.
2. Light stains can be removed with the help of a sponge and soapy water.
3. Do not use strong detergents, solvents or scrub against the fabric because it will damage the coating of the fabric.
4. Allow the fabric to air dry completely before rolling it back.

KOPER_k

www.kopershades.com