



KOPER<sub>k</sub>

Silksshade Blackout 0%



# Silkshade Blackout 0%

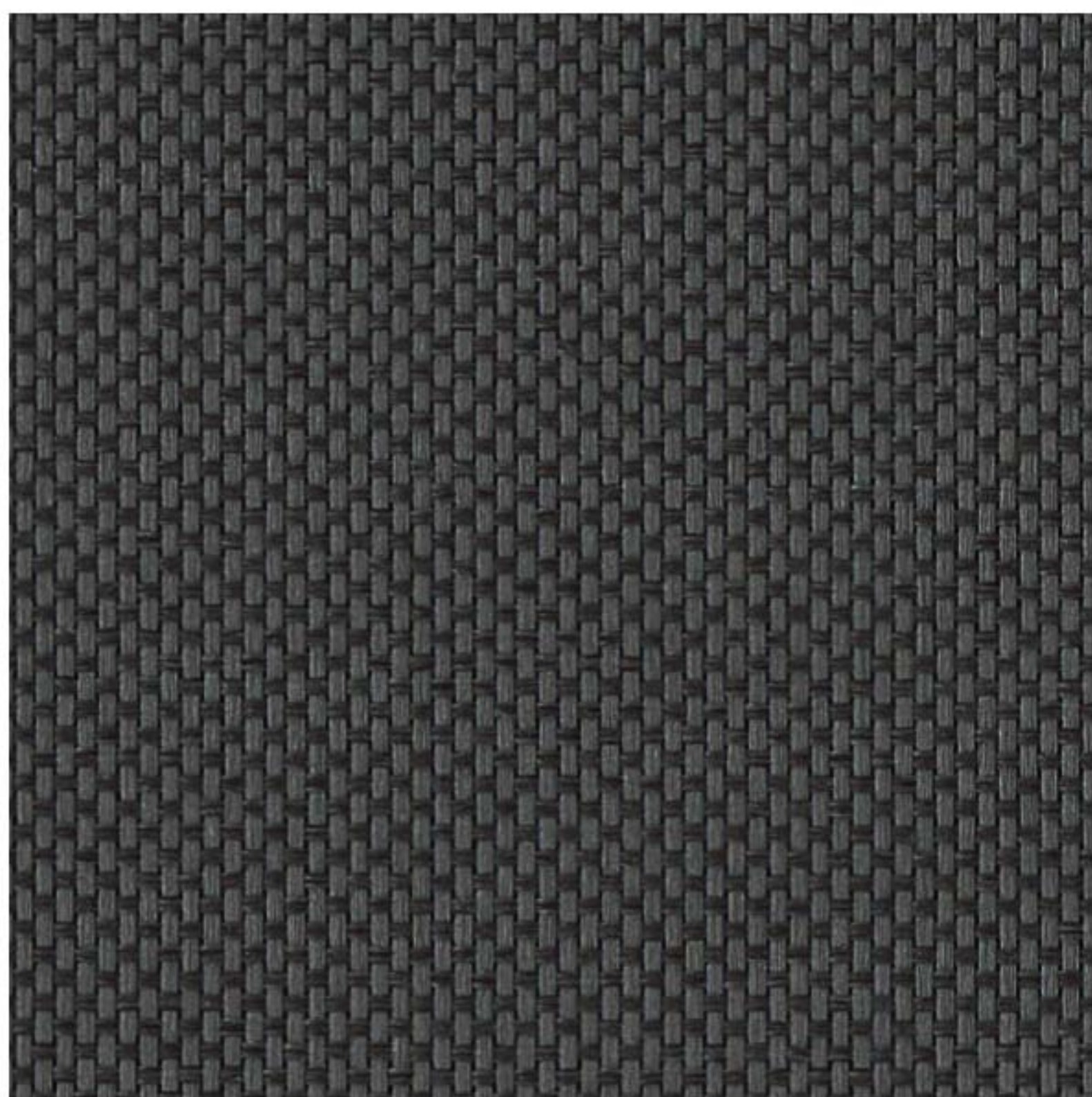
 PVC-free

 colour-matching foam backing

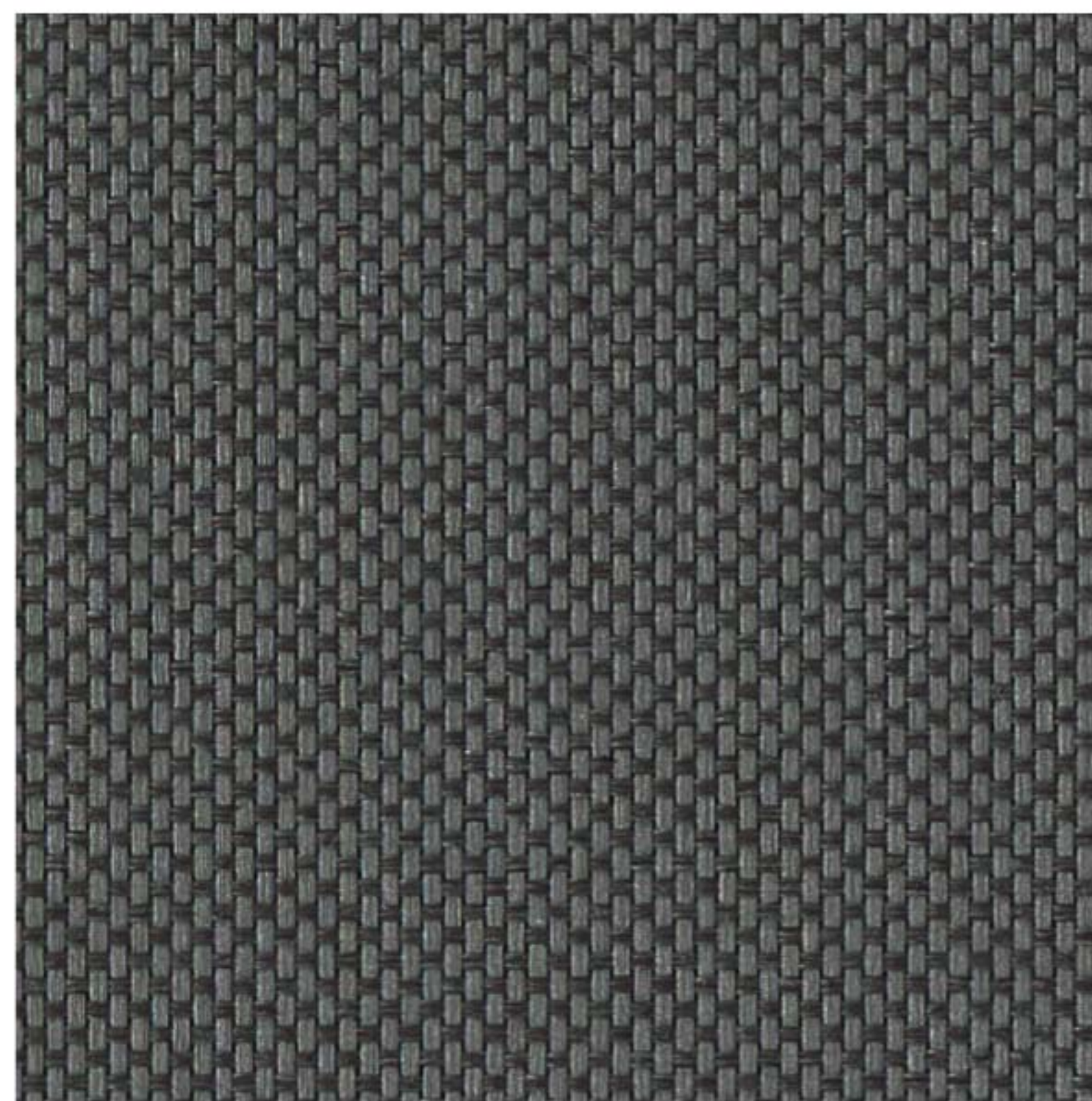
 very good glare control

 textile appearance

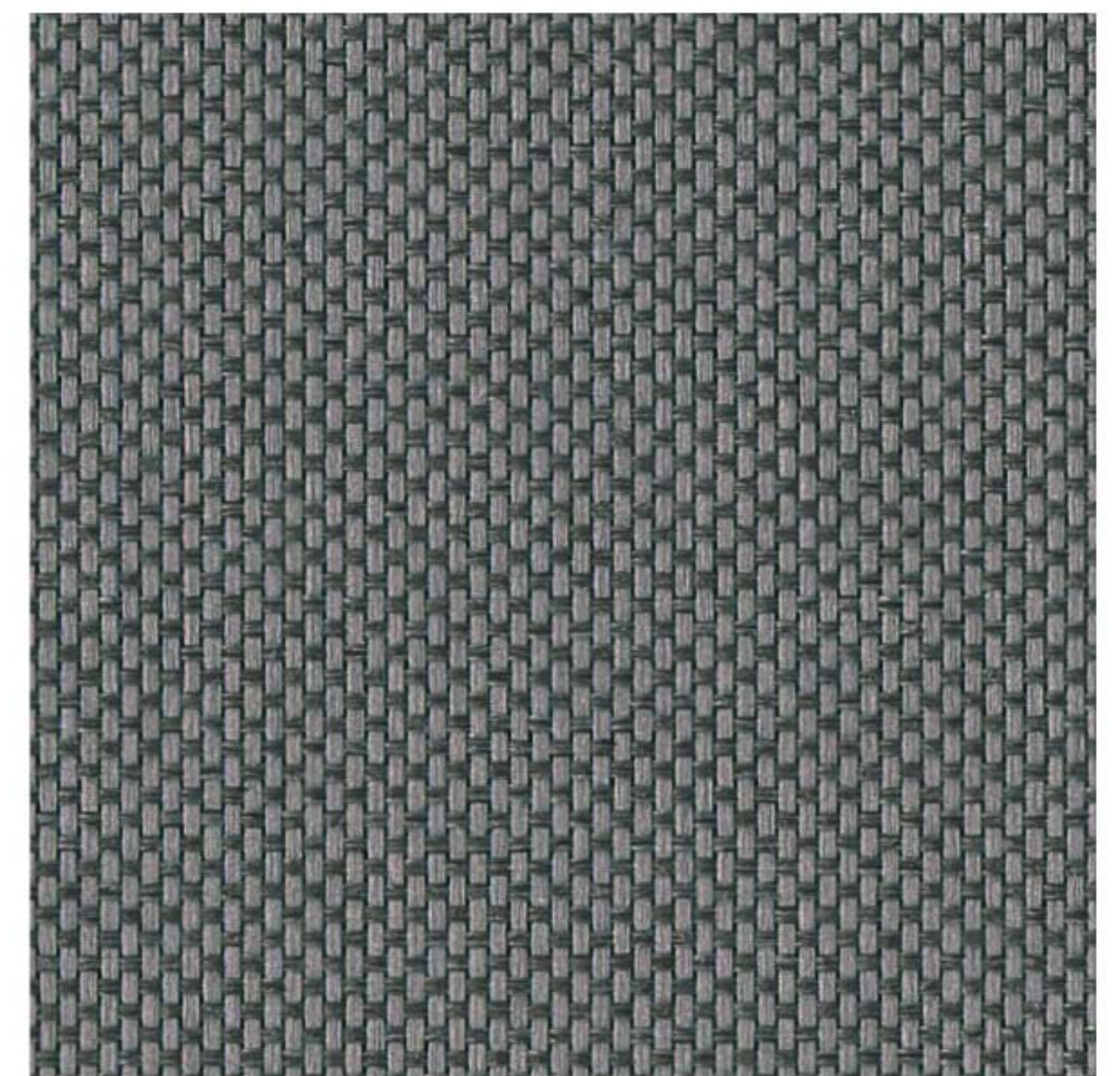
 very good night privacy



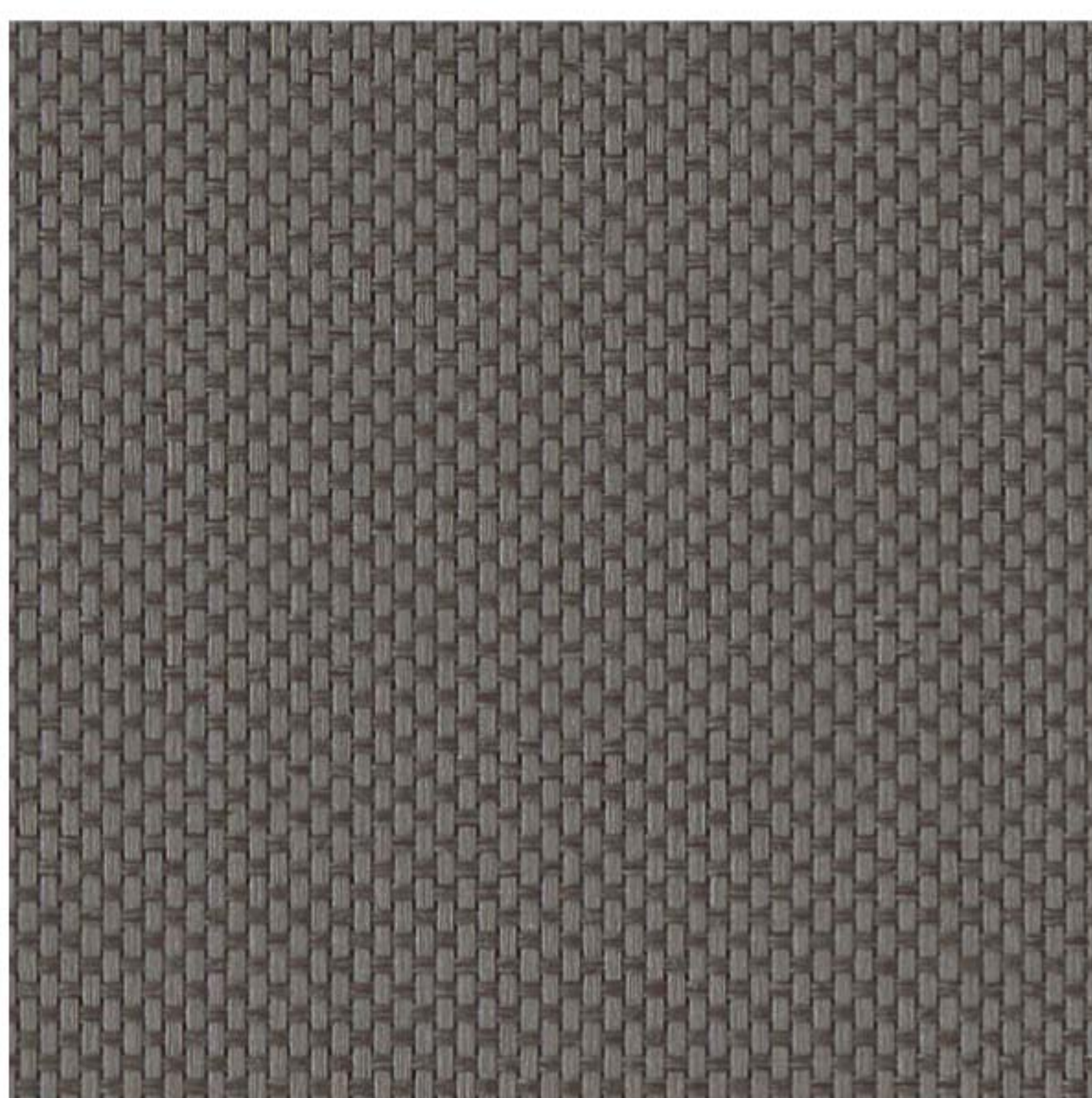
7172  
Rich Black



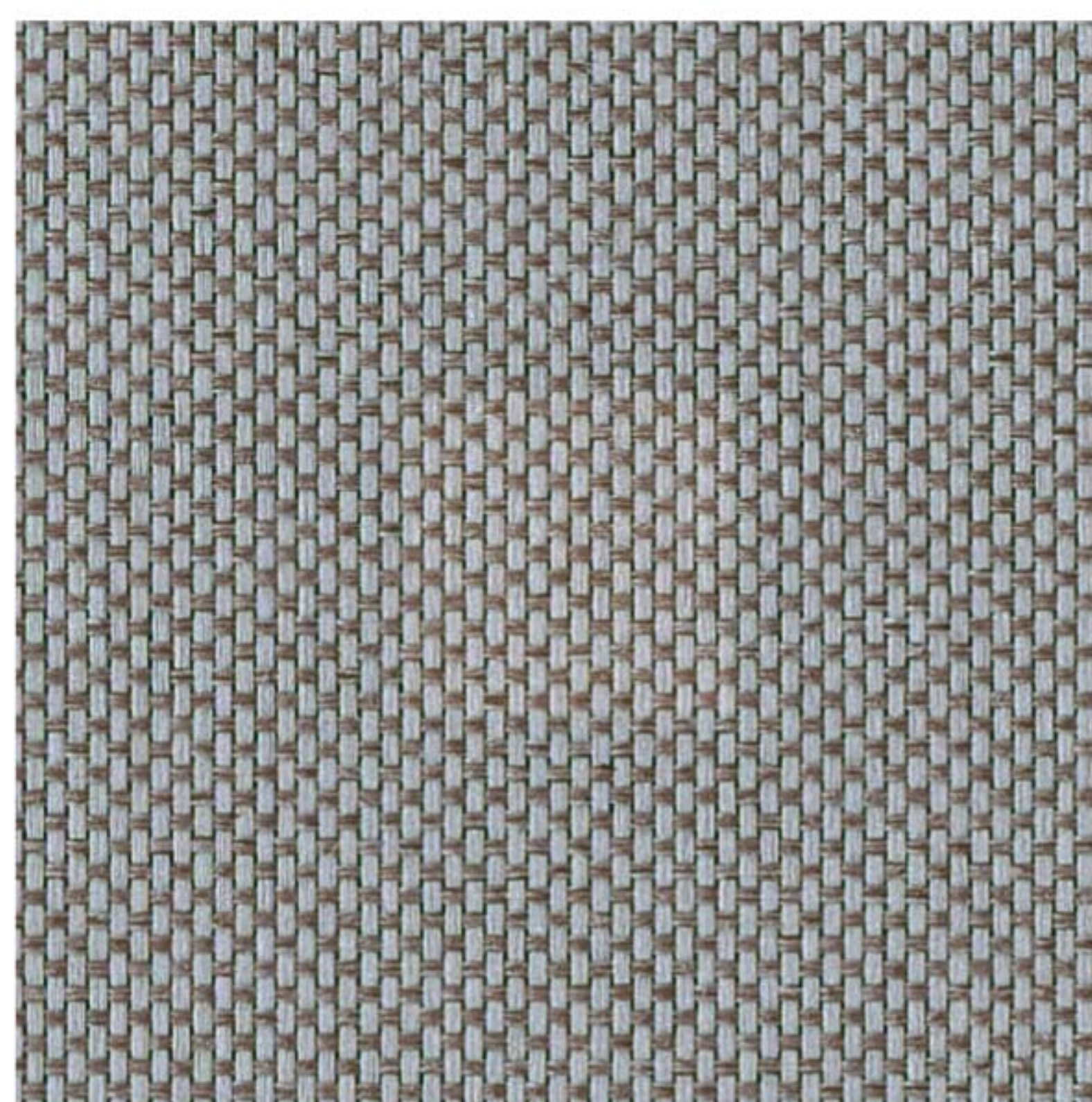
7033  
Charcoal



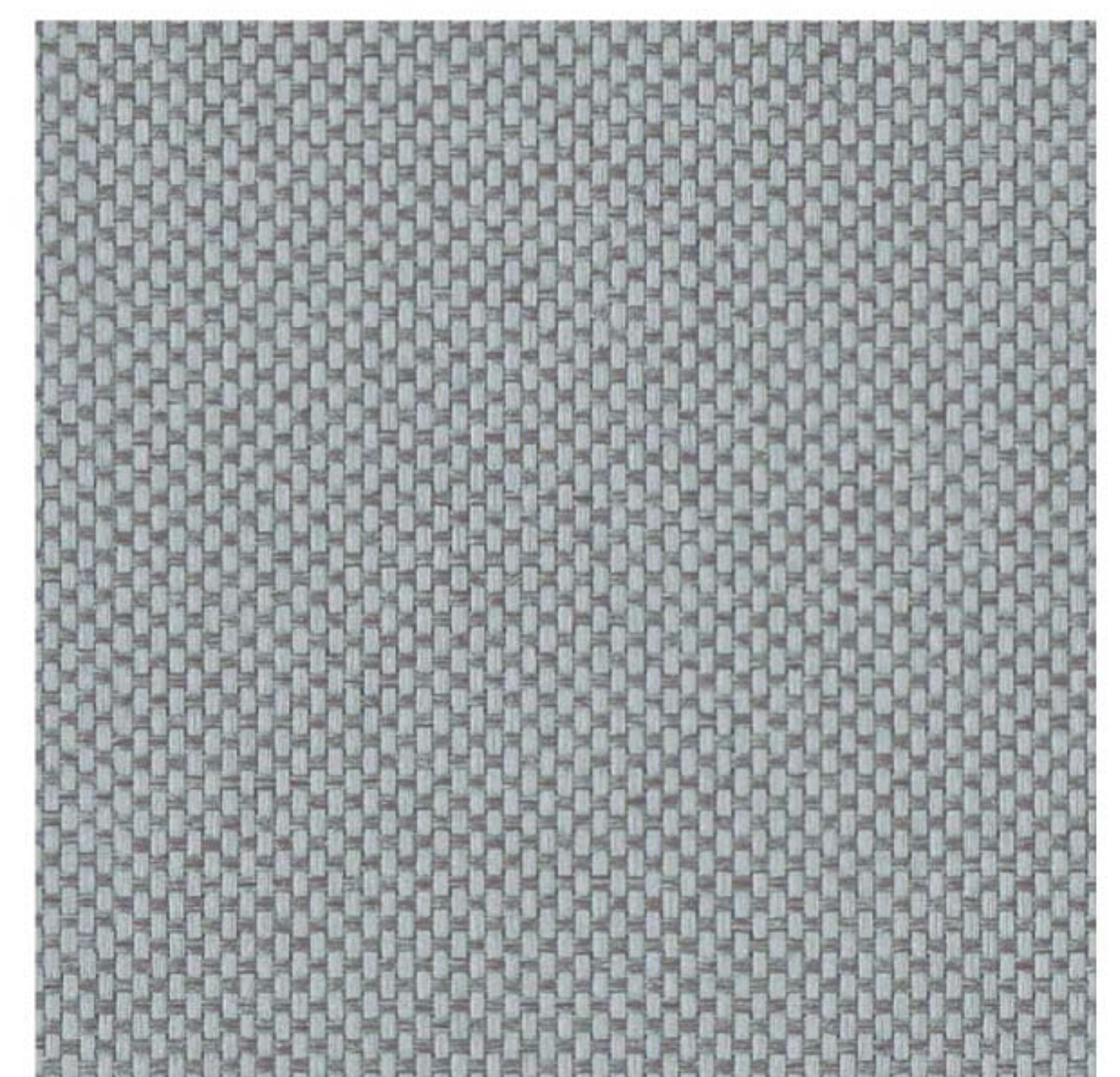
7183  
Hot Stone



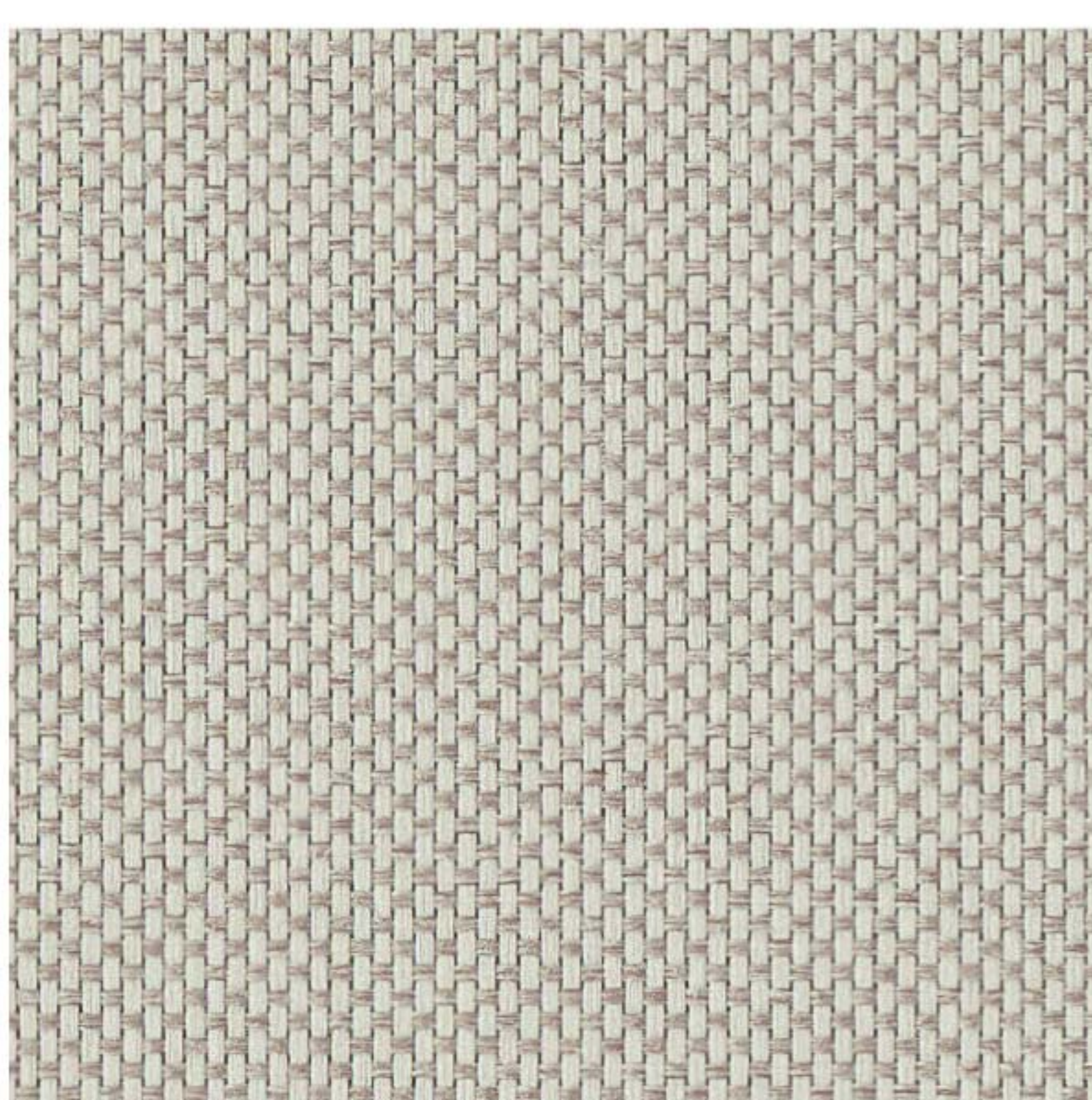
7174  
Dusty Fawn



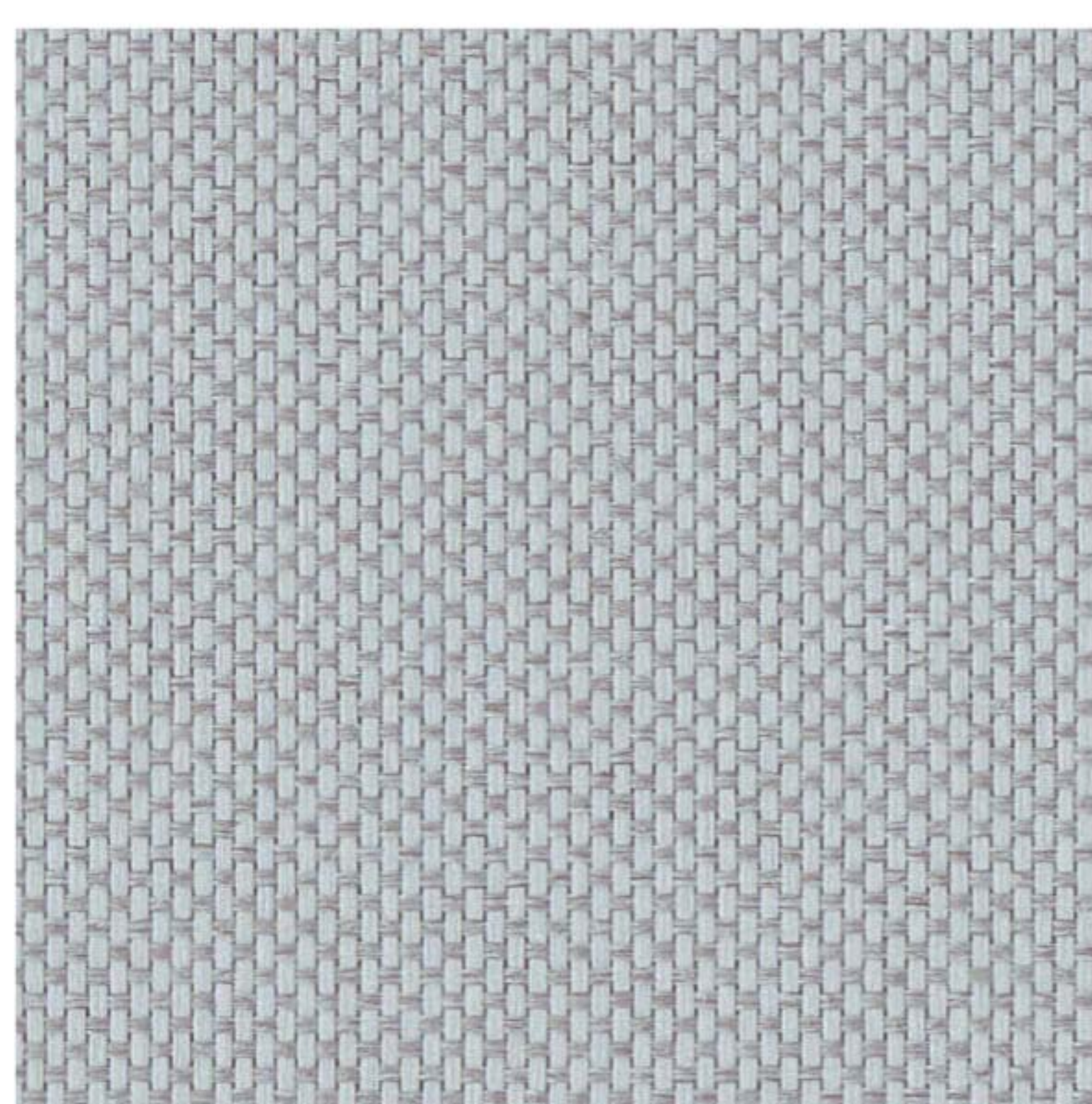
7184  
Cashmere



11284  
Grey Haze



10958  
Ivory



10957  
Snow

The colours shown may deviate from the original



Technical specification



		JM Silkshade Blackout			
Article		40827	401059	70717	70817
Width		240 cm / 94"	305 cm / 120"	89 mm / 3,5"	127 mm / 5"
Basic material		100 % polyester (Trevira CS)	100 % polyester (Trevira CS)	100 % polyester (Trevira CS)	100 % polyester (Trevira CS)
Weight approx.	EN 12127	280 - 360 g/m <sup>2</sup> 8,3 - 10,6 oz/yd <sup>2</sup>	280 - 360 g/m <sup>2</sup> 8,3 - 10,6 oz/yd <sup>2</sup>	280 - 360 g/m <sup>2</sup> 8,3 - 10,6 oz/yd <sup>2</sup>	280 - 360 g/m <sup>2</sup> 8,3 - 10,6 oz/yd <sup>2</sup>
Thickness approx.	EN ISO 5084	0,40 - 0,47 mm 0,016" - 0,019"	0,40 - 0,47 mm 0,016" - 0,019"	0,40 - 0,47 mm 0,016" - 0,019"	0,40 - 0,47 mm 0,016" - 0,019"
Openness factor OF	EN 14500	0 %	0 %	0 %	0 %
Flame retardancy		B1 / C1 / NFPA 701	B1 / C1 / NFPA 701	B1 / C1 / NFPA 701	B1 / C1 / NFPA 701
Light fastness (window side)	EN ISO 105-B02	min. 5-6	min. 5-6	min. 5-6	min. 5-6
Tensile properties: Determination of max. force Elongation at max. force	EN ISO 13934-1	warp: > 100 daN - weft: > 50 daN warp: approx. 30 % - weft: approx. 20 %		warp: > 100 daN - weft: > 50 daN warp: approx. 30 % - weft: approx. 20 %	
Suitable for moist atmosphere		yes	yes	yes	yes
Manufacturing guidance		to cut with cold knife	to cut with cold knife	to manufacture with welding agent, please confirm by pretests	to manufacture with welding agent, please confirm by pretests
Roll length approx.		30 m / 33 yd	30 m / 33 yd	100 m / 109 yd	100 m / 109 yd
Care instruction		spongeable	spongeable	spongeable	spongeable

Optical and thermal factors

colour	optical factors										thermal factors					
	fabric					R <sub>a</sub>	classification				fabric				fabric + glazing	
	visible light (%)						glare control	night privacy	visual contact	daylight utilisation	solar radiation (%)				glazing E g=0,55 U <sub>g</sub> =0,8	
T <sub>v</sub>	R <sub>v</sub>	A <sub>v</sub>	T <sub>v,n-n</sub>	T <sub>v,n-dif</sub>						T <sub>s</sub>	R <sub>s</sub>	A <sub>s</sub>	T <sub>UV</sub>	g <sub>tot</sub>	class	
7172	0	9	91	0,0	0,0	45	4	4	0	0	0	8	92	0	0,51	0
7033	0	9	91	0,0	0,0	41	4	4	0	0	0	9	91	0	0,51	0
7183	0	17	83	0,0	0,0	39	4	4	0	0	0	15	85	0	0,49	1
7174	0	16	84	0,0	0,0	0	4	4	0	0	0	16	84	0	0,49	1
7184	0	34	66	0,0	0,0	49	4	4	0	0	0	30	70	0	0,45	1
11284	0	38	62	0,0	0,0	28	4	4	0	0	0	35	65	0	0,43	1
10958	0	60	40	0,0	0,0	0	4	4	0	0	0	53	47	0	0,38	1
10957	0	80	20	0,0	0,0	52	4	4	0	0	0	69	31	0	0,34	2

Data is measured according to EN 410:2011 and EN 14500:2021. Calculations of g<sub>tot</sub> are defined according to EN ISO 52022-1:2017 using triple glazing type E (g=0,55; U<sub>g</sub>=0,8). Other glazing types can be calculated on request.

Classifications: 0 (very little effect), 1 (little effect), 2 (moderate effect), 3 (good effect) and 4 (very good effect) refer to EN 14501:2021.

All specifications are based on average values and may deviate within the standard tolerance limits. Subject to technical modifications.

The life span of these products is at least four years, starting from the commercial launch of these items. Please request the individual life span for each product by contacting our customer service team.

Product certificates and guarantees



Sustainable building certificates

All fabrics certified according to SCS Advantage™ Gold can contribute to credits in sustainable building certifications, such as LEED, DGNB and BREEAM.

