

KOPER<sup>k</sup>



KOPER<sub>k</sub>

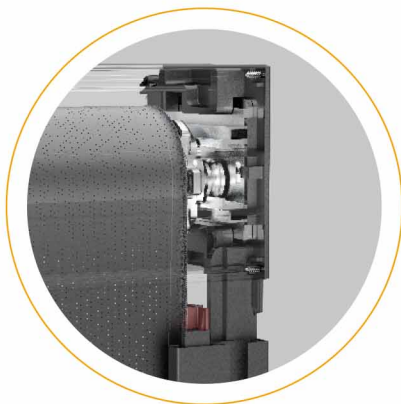
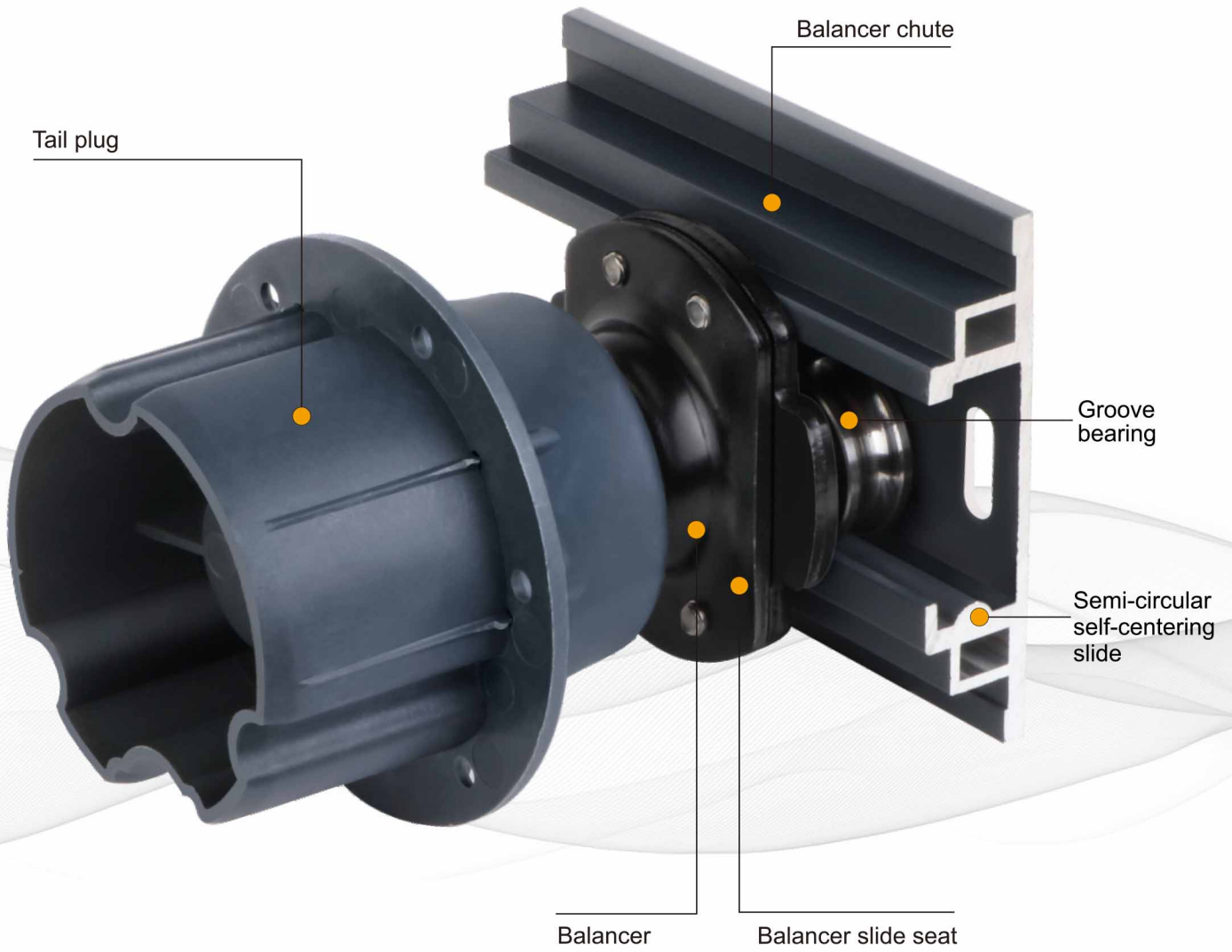
CORE  
TECHNOLOGY



Core technology

01

Smart balancer make the windproof roller blinds more durable



Zipper vertically into the zipper guide rail, the whole process of care, the fabric is more flat

Core technology

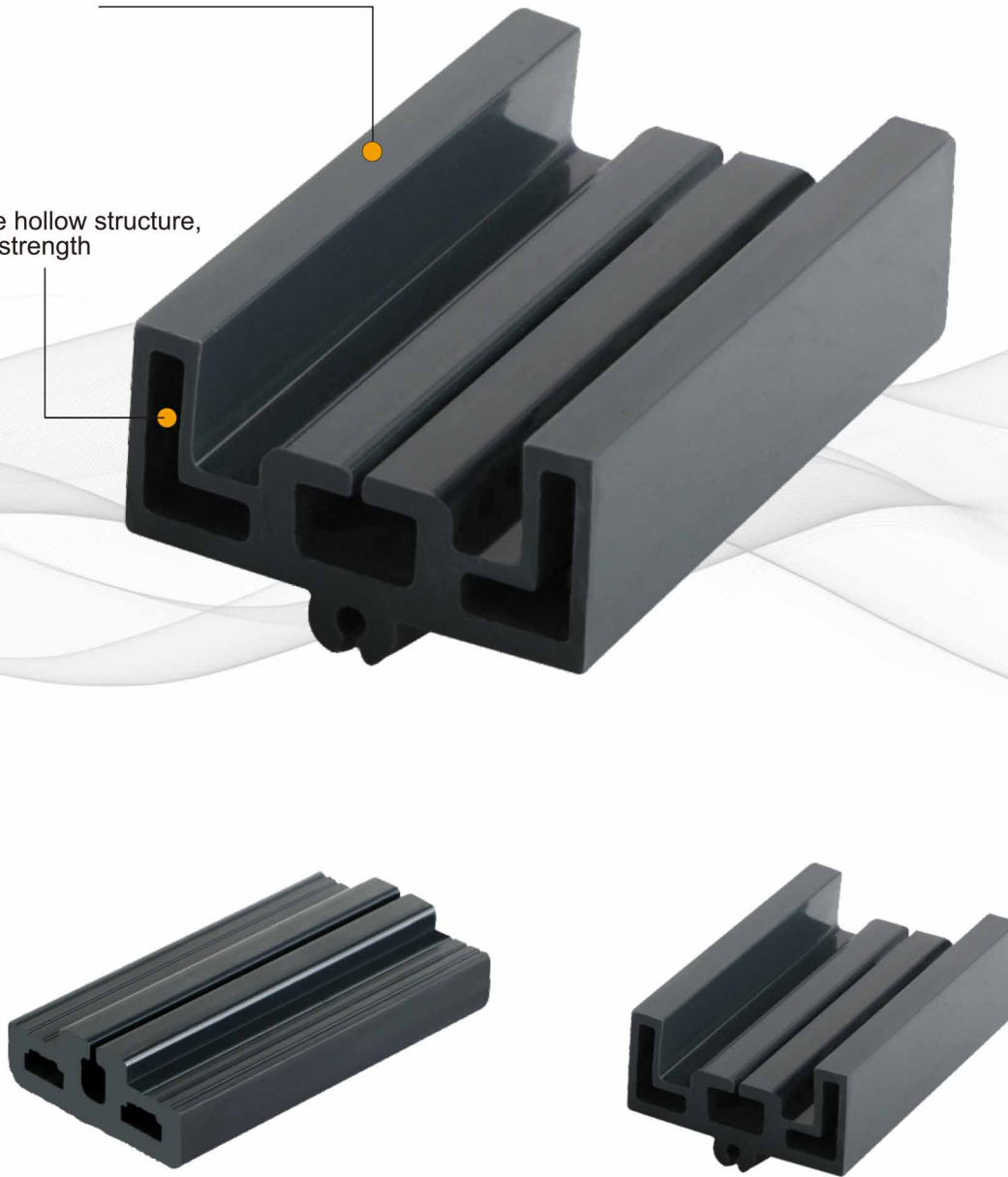
02

Hollow structure  
High temperature  
resistant zipper guide  
Keep the zipper stable



High temperature resistant,  
antioxidant material

Unique hollow structure,  
better strength



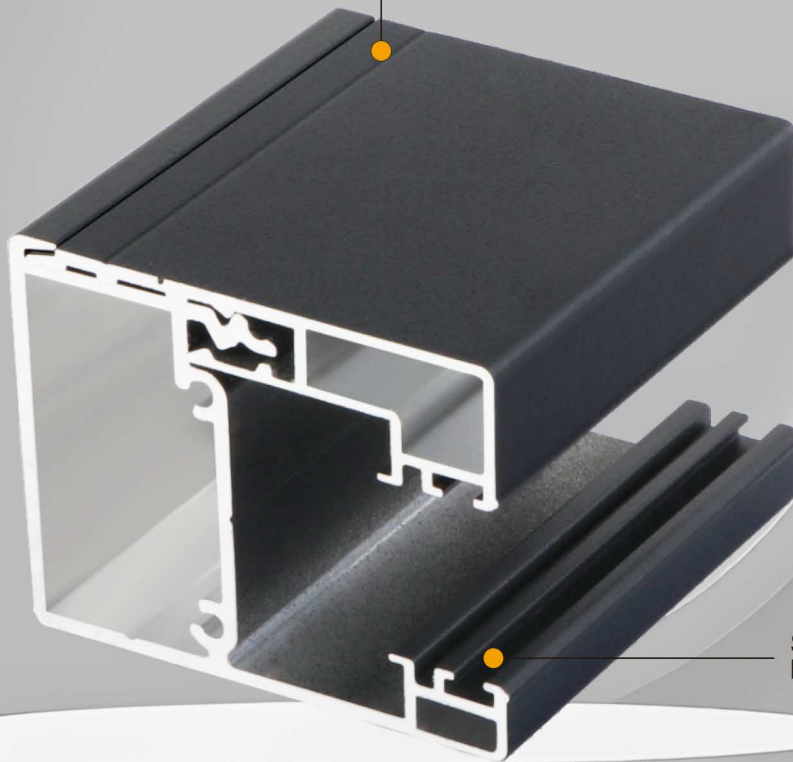
Core technology

03

No screws installation  
side rail, more convenient  
disassembly

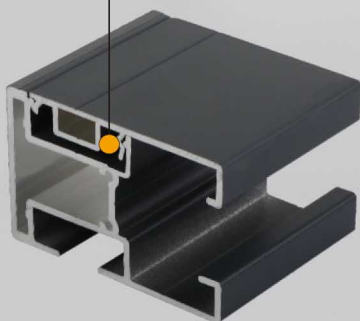


Insert bayonet diagonally  
for easy disassembly



Silencer bar can  
be installed

External buckle type,  
better wind resistance



Z12 snap side rail

Core technology

04

**Fabric oriented  
technique,  
Make the  
windproof roller blind  
more flat**

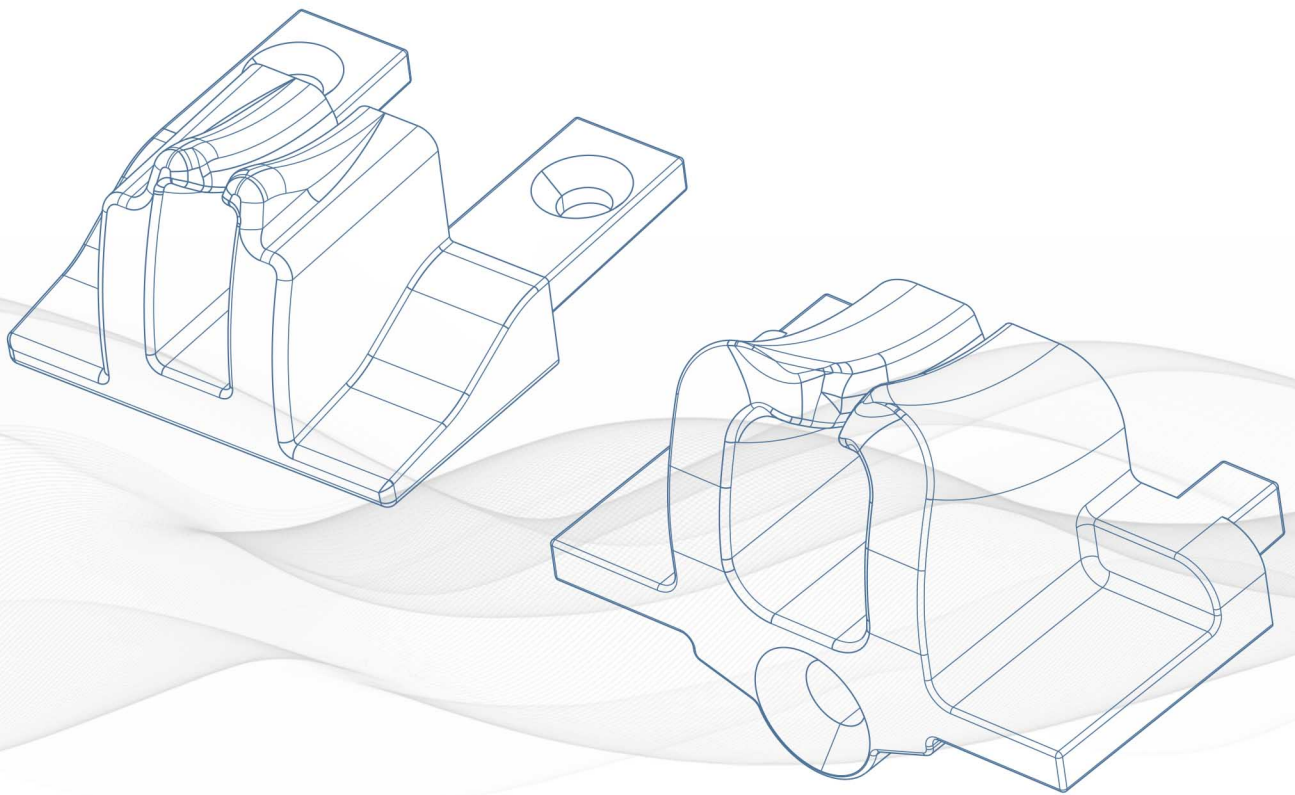


- ▶ Equipped with wear-resistant nanostrips to reduce fabric friction noise;
- ▶ At the same time will face the zipper vertical direction into the guide rail;
- ▶ Nanostrip assisted, the balancer automatically adjusts the center position according to the amount of the winding of the fabric to ensure that the fabric is protected with a small Angle to ensure life;

Core technology

05

**Metal zipper rail end plug,  
Make the windproof roller  
blinds better wind  
resistance**



## WINDPROOF ROLLER BLINDS



Strong  
Windowproof



Sun  
Shade



Rainstorm



Thermal  
insulation



Temperature  
control



Beautify  
theenvironment

- ▶ Smart balancer, let the zipper vertically into the zipper guide rail, flat fabric, good wind performance;
- ▶ Snap side rails and three-piece side rails (finished products) are available;
- ▶ Use 78 double-layer tubes, up to 6 meters wide, use 63 thick tubes, up to 5 meters high;



Core technology

09

Aviation aluminum profile, nylon plus fiber engineering plastic structural parts, national standard 304 stainless steel hardware connector, so that the system corrosion resistance is better  
(78 double tube, 63 tube)



The special double tube makes the windproof blinds wider and straighter-78mm tube



63 tube

Core technology

10

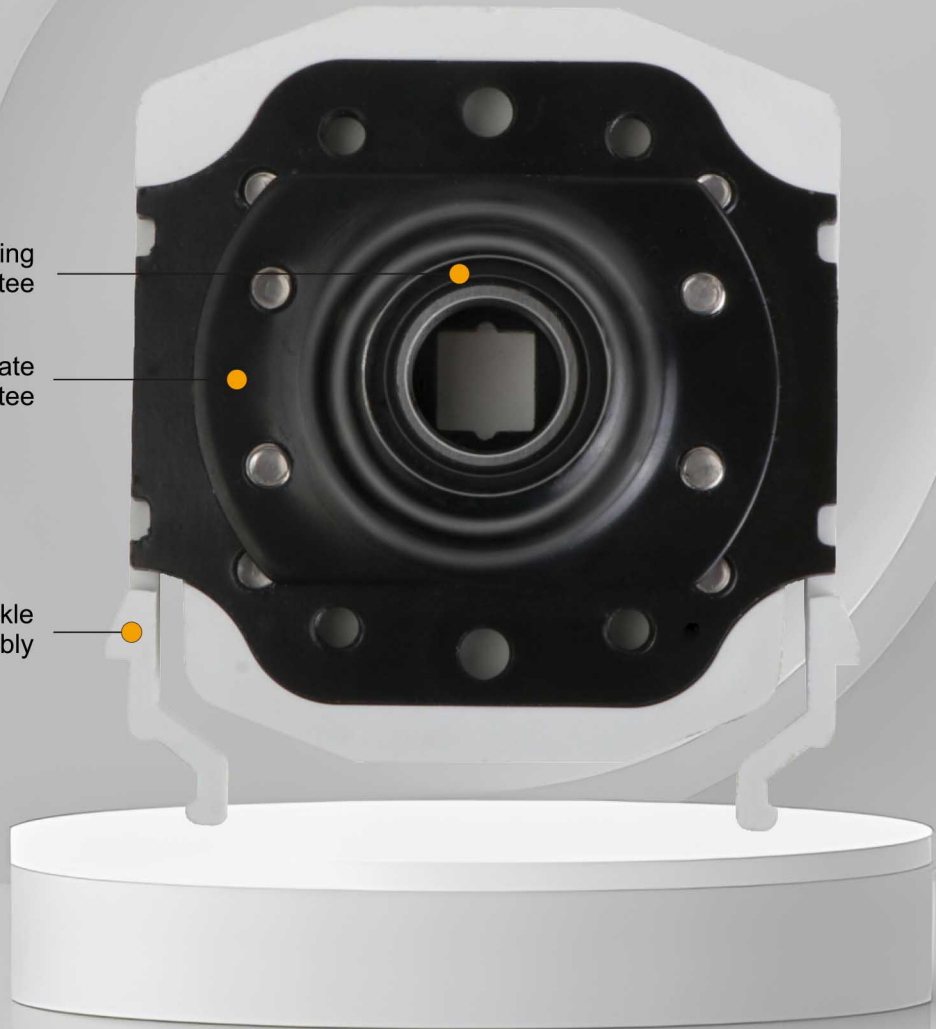
**Gravity bearings, Make the system run with little resistance. More durable**



Gravity bearing  
Life guarantee

Extra-thick steel plate  
Strength guarantee

Self-locking buckle  
Easy disassembly



Core technology

11

**Extra wide windproof  
roller blinds Motor  
maintenance technology**



Easy fabric installation  
technology

Built-in fabric flat  
core technology

High strength connection

You can change the motor  
without removing the blinds



# Outdoor special windproof roller blinds system

## Z12 Windproof roller blinds series

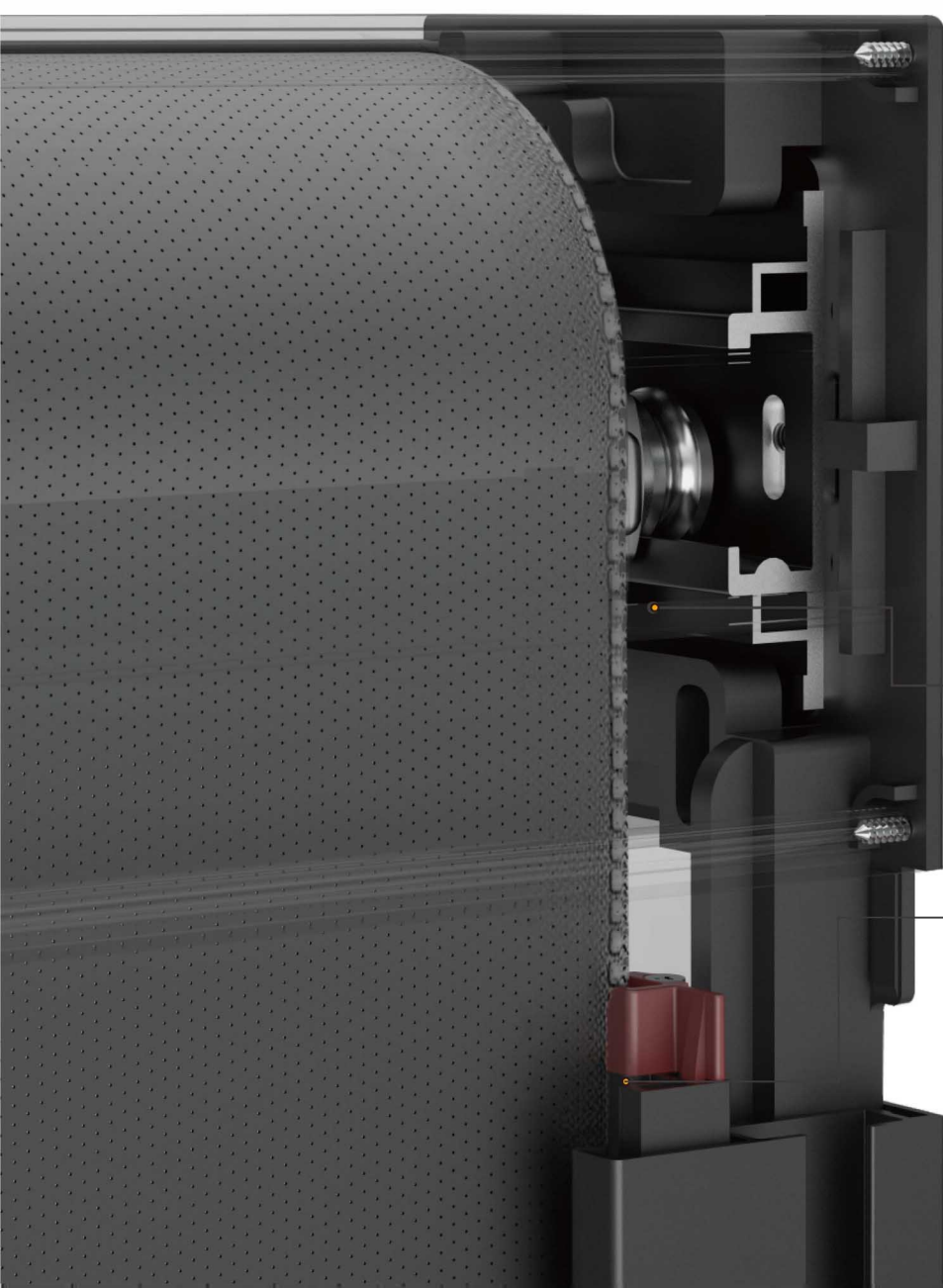
### Z12 Motorized windproof roller blinds

Width up to 6 meters, multiple smart home connections, widely used in sunrooms,clubhouses, balconies and other high-end places



## Z12 Windproof roller blinds application features

- ▶ 120x120mm Cassette system;
- ▶ Smart balancer, windproof roller blinds last longer
- ▶ External buckle side rail, excellent windproof performance;
- ▶ Double zipper guide for better strength
- ▶ Ultra-thick 78 double-layer tube, windproof curtain up to 6 meters wide, using 63 aluminum tube, height up to 6 meters;
- ▶ Pull bead, hand push, hand, electric operating system, to meet the different needs of customers



### SMART BALANCER

SMART BALANCER MAKES WINDPROOF ROLLER BLINDS MORE DURABLE



### FLATTER FABRIC

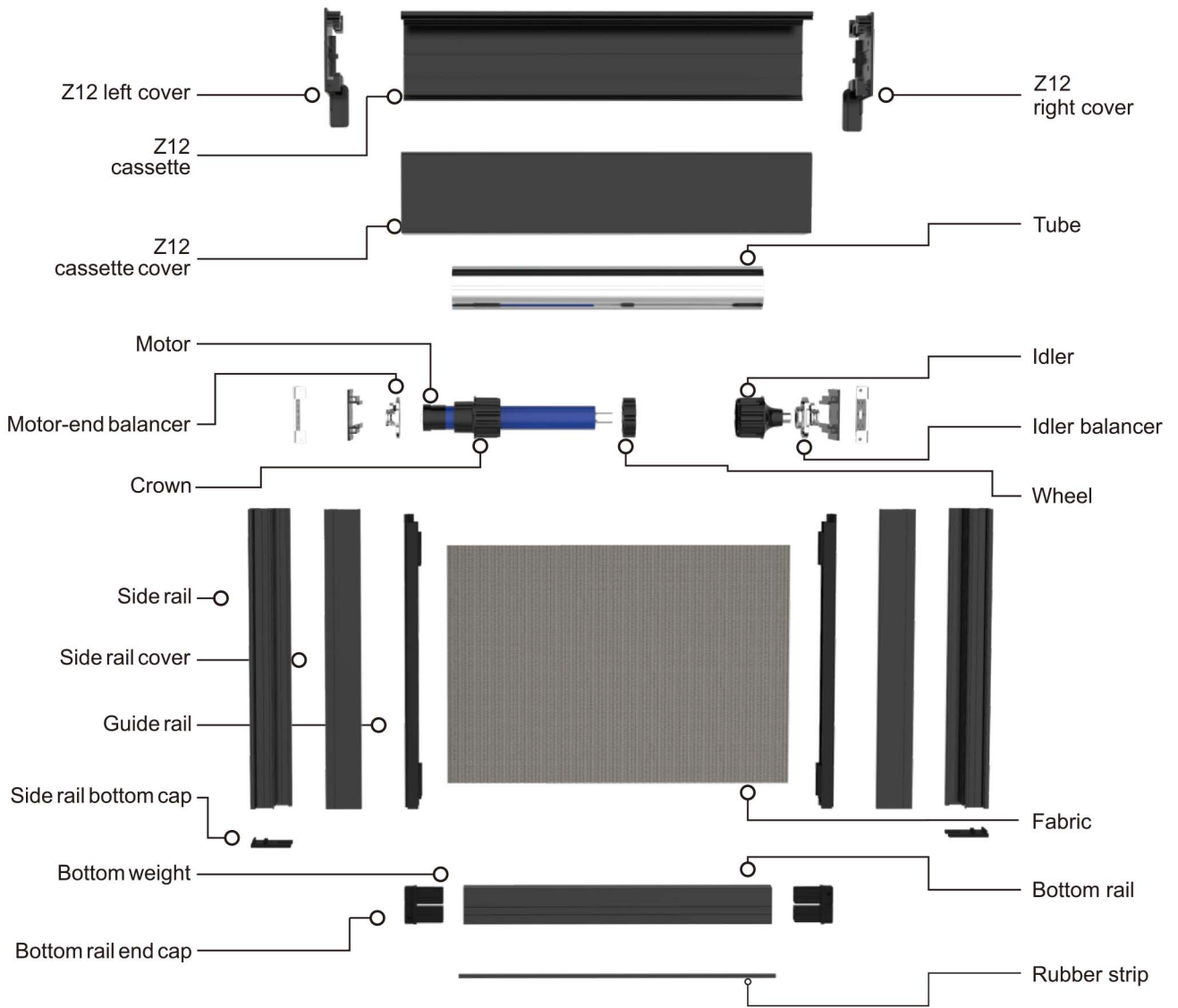
Smart balancer: Ensures that the face material is released or wound from the roll tube at an angle parallel to the zipper guide, making the face material run flatter and straighter.



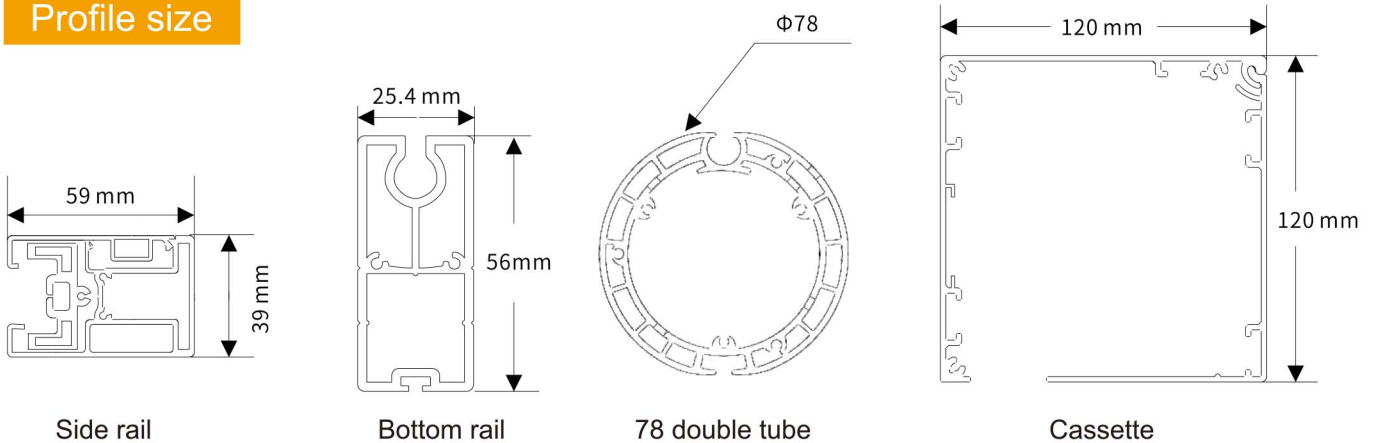
### FULL CARE OF ZIPPERS

Smart Balancer: Automatically adjusts the position of the center of the coil according to the amount of material, ensuring that the zipper always enters the zipper guide in a vertical position, taking care of the zipper throughout the process and ensuring that the system is used for a longer period of time.

# Z12 Windproof roller blind diagram



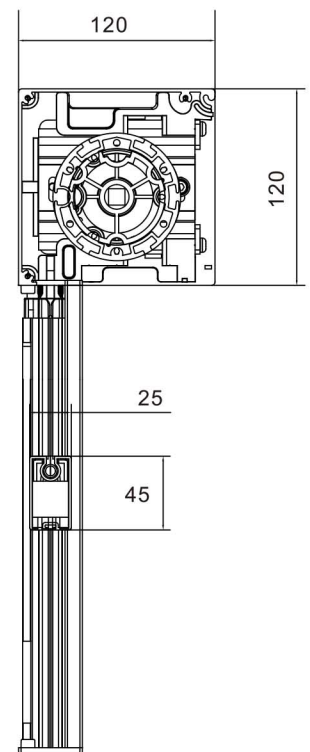
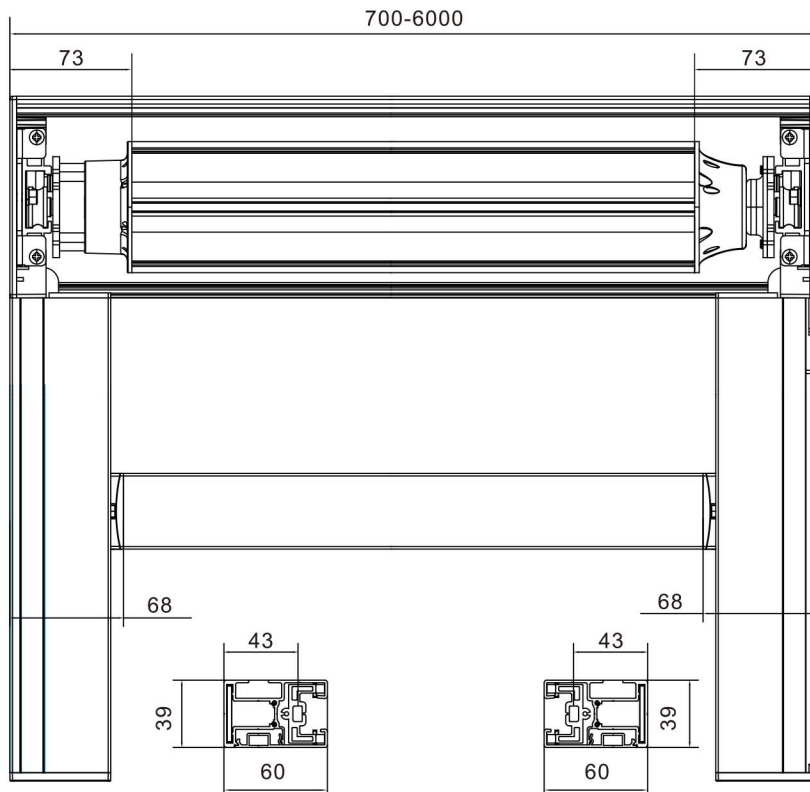
## Profile size



# Z12 The specification recommendation of windproof roller blinds

## The specification recommendation of windproof roller blinds

|               |   |               |                         |   |   |                         |  |
|---------------|---|---------------|-------------------------|---|---|-------------------------|--|
| Height        | With 63 tubes, the maximum height can exceed 5 meters, but the width should not be too wide, otherwise the tube will be bent; with 78 tubes, it is recommended that the single-layer tube be less than 5 meters in width and less than 3.5 meters in height; with 78 double-layer tubes, the width can be up to 6 meters and less than 3 meters in height |               |                         |   |   |                         | Various drive systems can be made              |
| Width         | Width<3m  |               |                         | width                                     |   |                         |  |
| Category      | DriveSystem   | Aluminum tube | Bottomrail              | DriveSystem                               | Aluminum tube   | Bottomrail              |  |
| Motorized     | 35 tubular motor AM35-10/17,10NM  | 63mm tube     | Heavyweight bottom rail | 35 tubular motor 10NM                     | 78mm tube   | Heavyweight bottom rail |  |
|               | 45 tubular motor 20NM   | 63mm tube     | Heavyweight bottom rail | 45 tubular motor 20NM                     | 78mm tubes (single-layer tube: up to 5 meters; double-layer tube up to 6 meters). | Heavyweight bottom rail |  |
| Hand push     | TI001 Spring locking torsion spring head  | 63mm tube     | Easy to pull            | TI001 Spring locking torsion spring head  | 63mm tube   | Easy to pull            | 0.92M  |
| Chain control | Z12 63 CLUTCH   | 63mm tube     |                         |   |   |                         | 0.4M   |
| Hand operated | Turbo transmission with fixed plate B09-C   | 63mm tube     | Heavyweight bottom rail | Turbo transmission with fixed plate B09-C | 63mm tube   | Heavyweight bottom rail | The recommended width is less than 4m<br>0.35M |



## Z18 DOUBLE WINDPROOF ROLLER BLINDS

- ▶ Face oriented technology, let the zipper vertically into the zipper guide rail, make fabric flat;
- ▶ Fastener self-locking installation fixed seat;
- ▶ Double card type side track;
- ▶ Electric operating system;
- ▶ Use 63 tube, width less than 4 meters;





## Z18 Double windproof roller blind



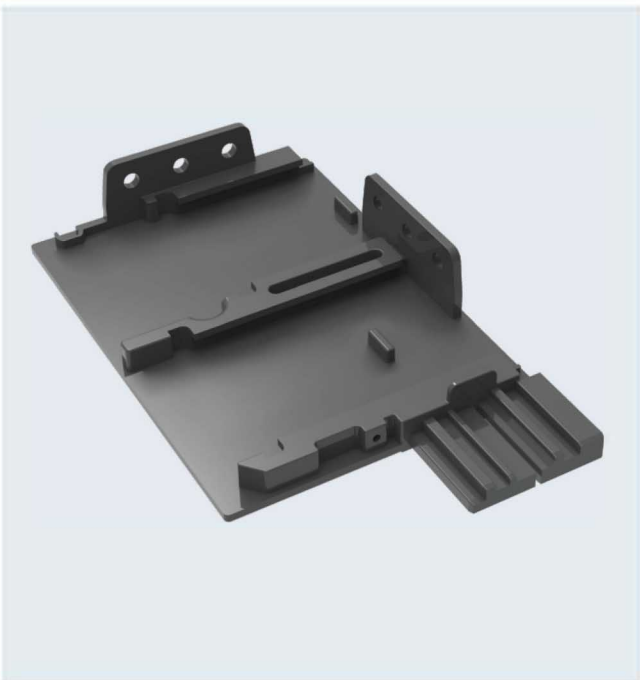
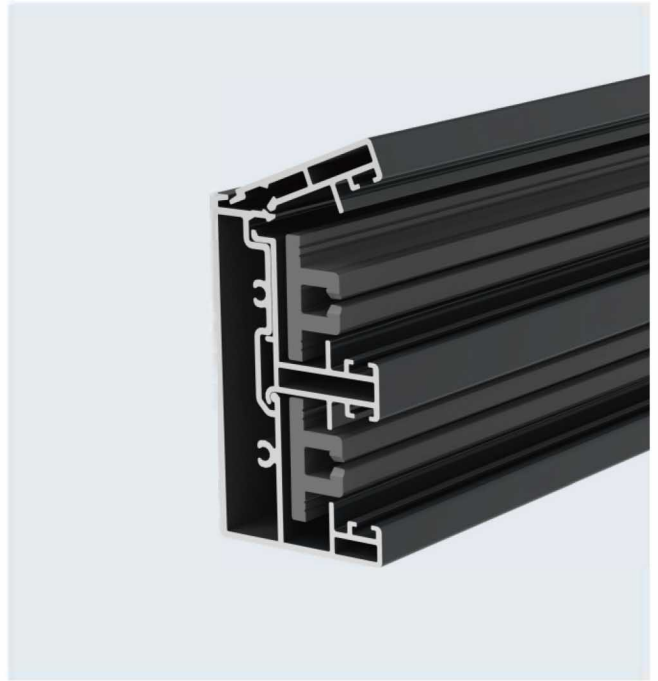
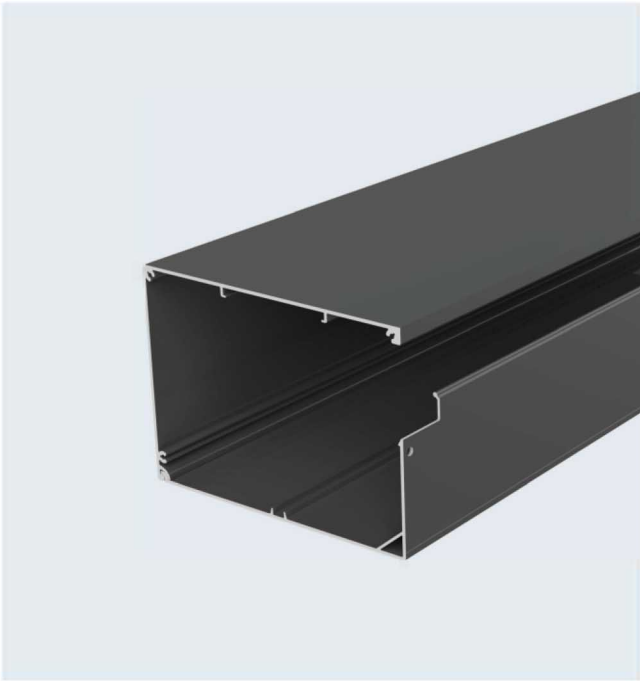
## Z18 Double electric windproof roller blind

Width up to 4 meters; A variety of smart home interfaces, widely used in stores, homes, offices and other places.



## Double windproof roller blind

- ▶ 130\*180 mm cassette system; Install two layers of semi-shading and full-shading fabrics;
- ▶ Button-type mounting base, easy to install;
- ▶ Side buckle double track, easy to install;
- ▶ Small zipper rail. Compact structure;
- ▶ The use of ultra-thick 63 double-layer tube, windproof blind up to 4 meters wide, height less than 3.2 meters;
- ▶ Electric operating system, special use for indoor places;

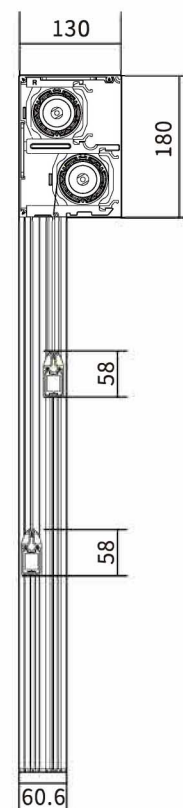
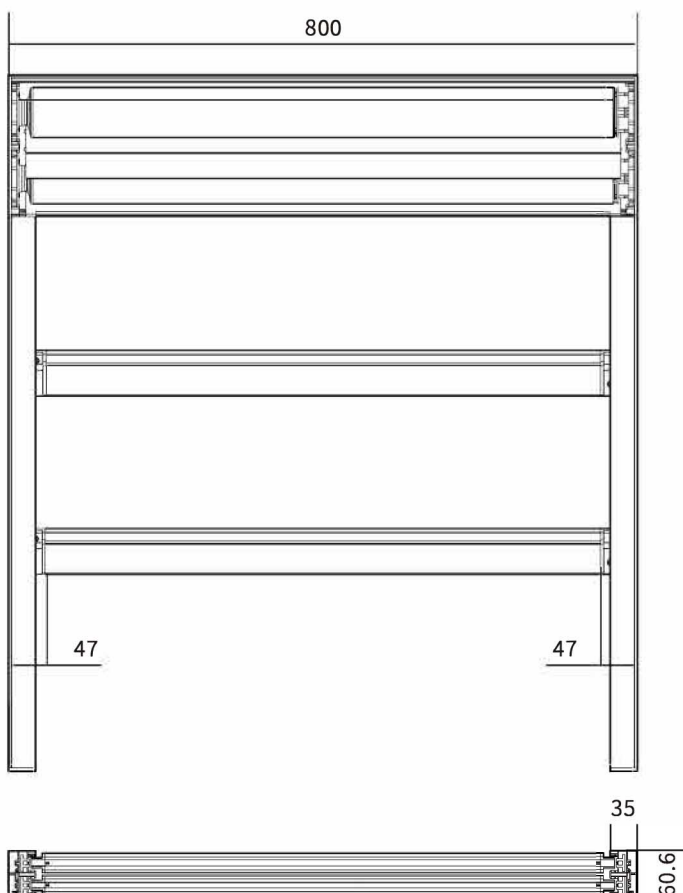




# Z18 Double windproof roller blind recommendation form

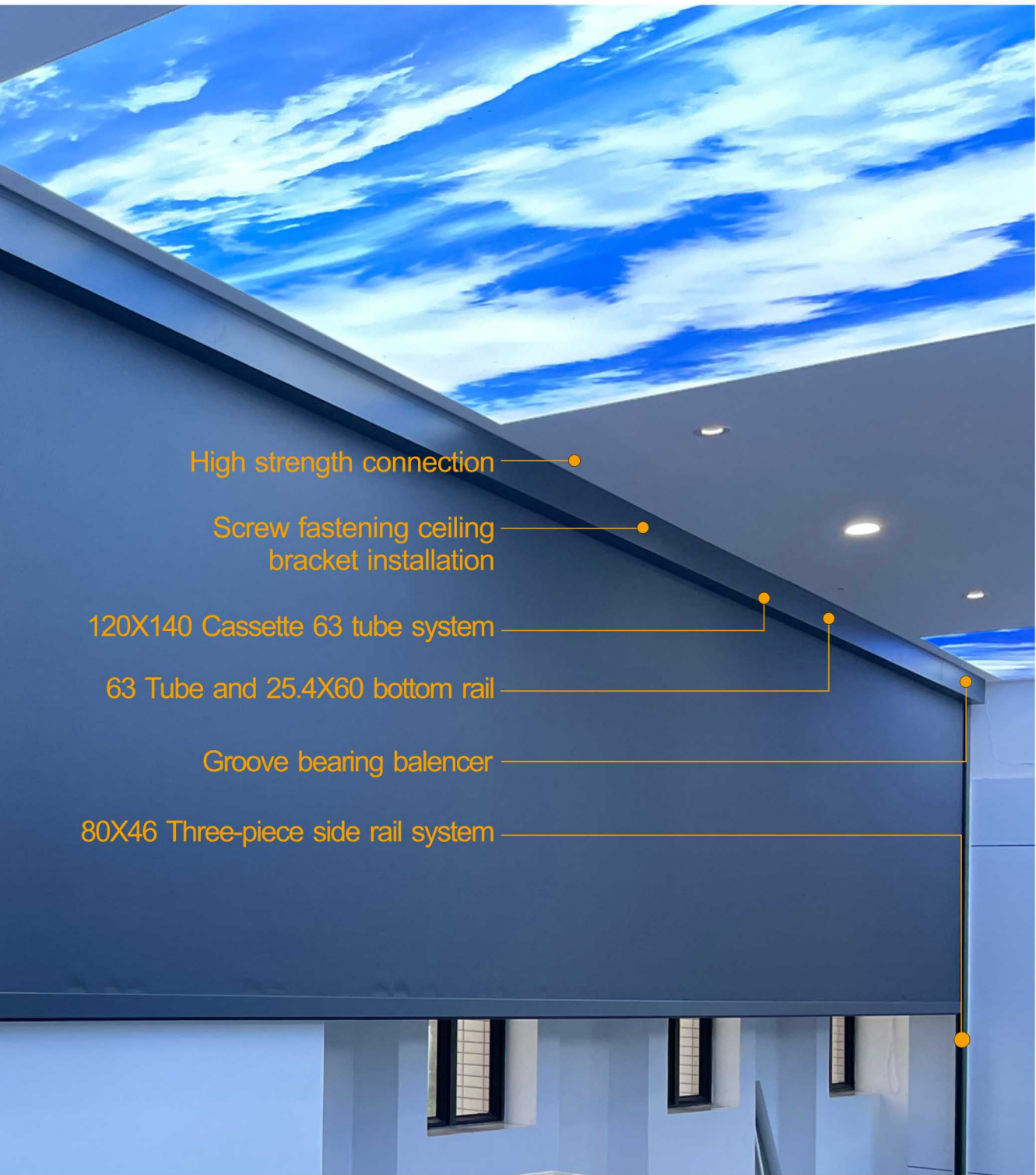
## The specification recommendation of double windproof roller blinds

| Width                      | width <2.5m                       |                        |                          |                | 3m<width<4m                |               |                          |                | Remarks   | Various drive systems can be made |
|----------------------------|-----------------------------------|------------------------|--------------------------|----------------|----------------------------|---------------|--------------------------|----------------|---|-----------------------------------|
| Category                   | Drive System                      | Aluminum tube          | Bottom rail              | Maximum height | Drive System               | Aluminum tube | Bottom rail              | Maximum height |   |                                   |
| Motorized                  | 38 tubular motor AM35-10/17, 10NM | 55mm tube              | Heavy duty bottom rail   | 5m             | 45 tubular motor 20NM~30NM | 63mm tube     | Heavy duty bottom rail   | 3.5m           |   | 35 tubular motor 0.76M            |
|                            |                                   | 63mm tube              |                          | 3.5m           |                            |               |                          |                |   |                                   |
| 45 tubular motor 20NM~30NM | 63mm tube                         | Heavy duty bottom rail | 3.5m                     |                |                            |               |                          |                |   | 45 tubular motor 0.8M             |
| Hand push                  | TI001 Spring system               | 63mm tube              | Easy to pull Bottom rail |                | TI001 Spring system        | 63mm tube     | Easy to pull bottom rail |                | It is recommended that the height is below 2.2 meters | 0.8M                              |



## Z14 WINDPROOF BLINDS

- ▶ Width of more than 10 meters, super wide windproof blinds special system;
- ▶ The surface section is flat and straight, and the tube is never bent;
- ▶ Strong side rail, strong wind resistance;
- ▶ Easy to install on site;
- ▶ Motor maintenance system without disassembling the whole windproof blinds;
- ▶ Beautiful appearance, exquisite;



High strength connection

Screw fastening ceiling  
bracket installation

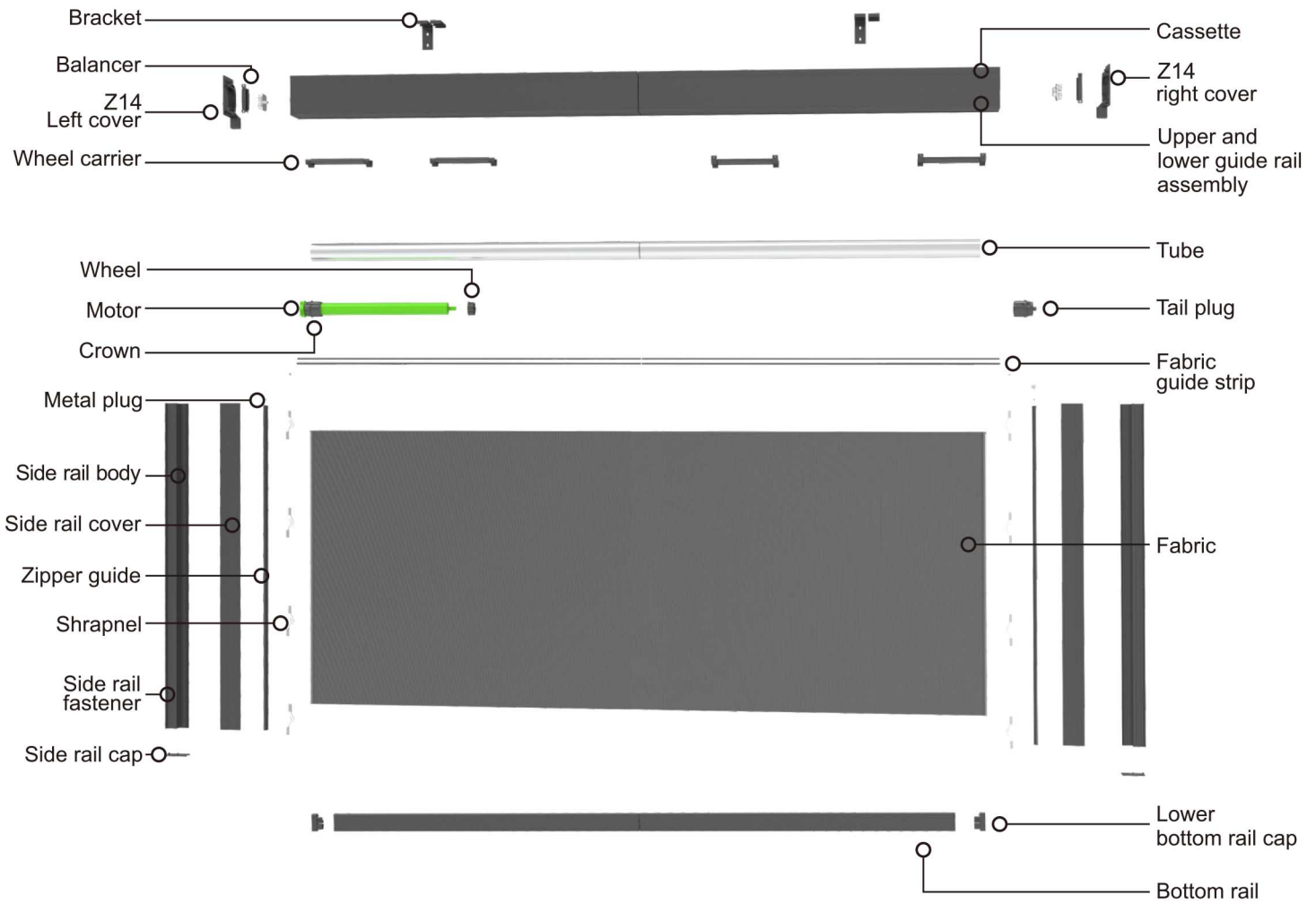
120X140 Cassette 63 tube system

63 Tube and 25.4X60 bottom rail

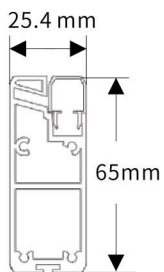
Groove bearing balancer

80X46 Three-piece side rail system

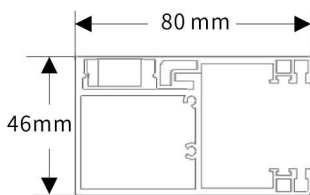
# Z14 Oversized windproof roller blind diagram



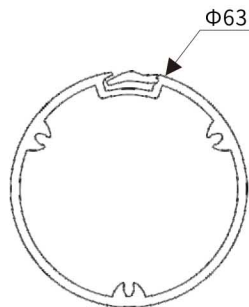
## Profile size



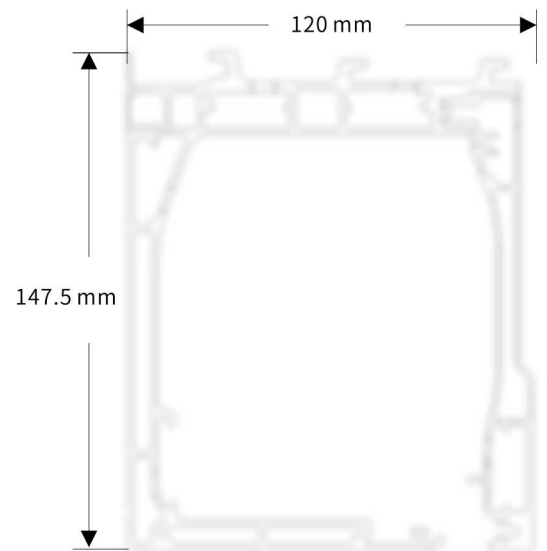
Side rail



Bottom rail



63 Tube



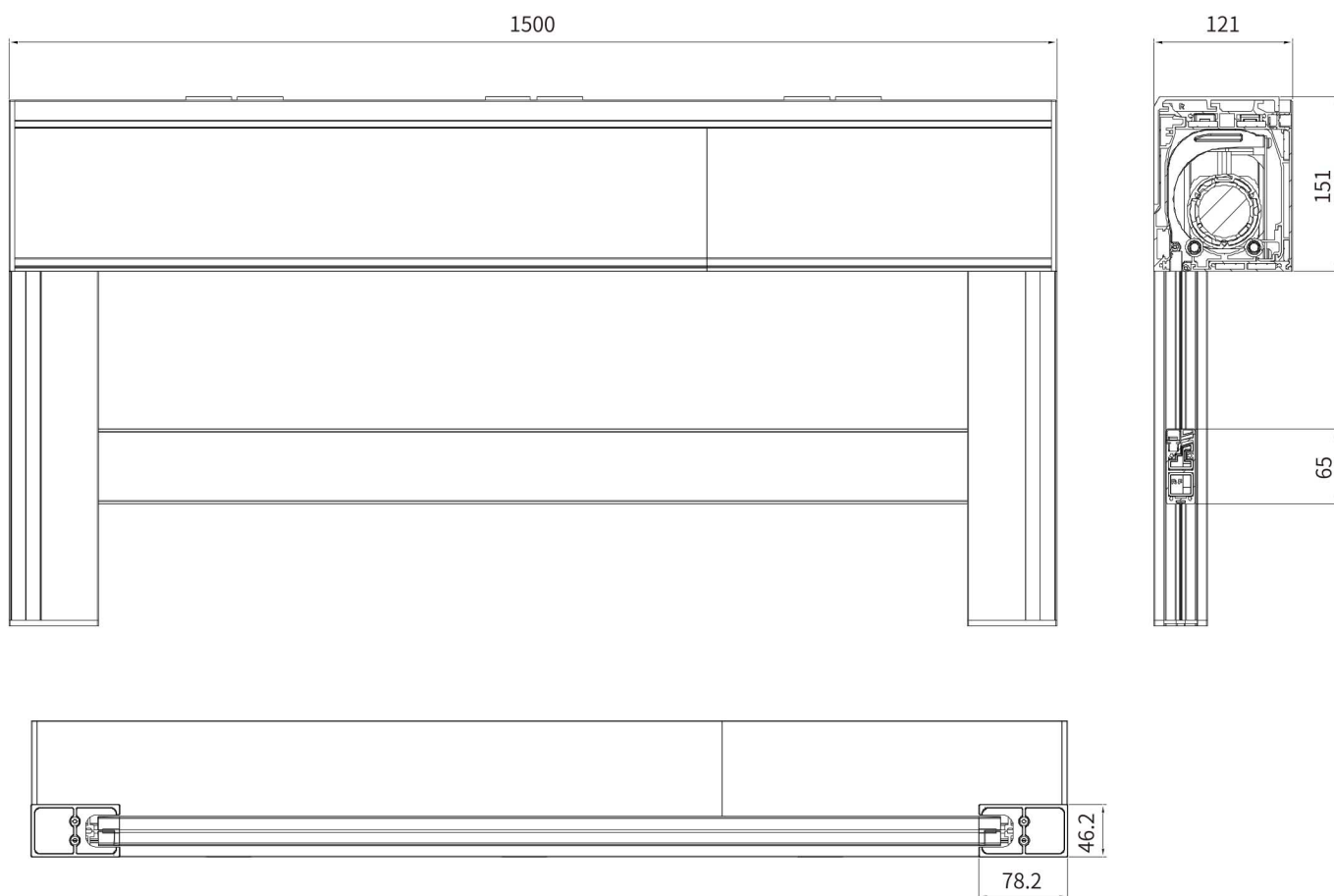
Cassette



# Z14 Oversized windproof roller blind recommendation form

## The specification recommendation of oversized windproof roller blinds

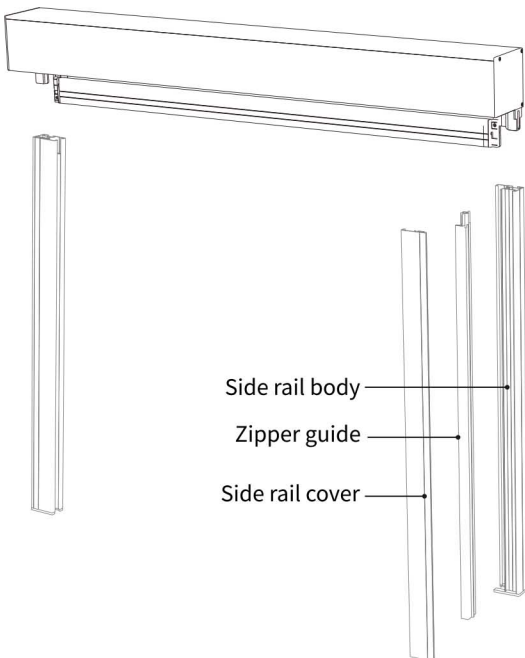
| Width     | 4m<width<15m          |                                   |                 |                | Remarks | Various drive systems can be made |
|-----------|-----------------------|-----------------------------------|-----------------|----------------|---------|-----------------------------------|
| Category  | Drive System          | Aluminum tube                     | Bottom rail     | Maximum height |         |                                   |
| Motorized | 45 tubular motor 50NM | 63 Fastening groove aluminum tube | Bottom rail Z14 | 3m             |         | 45 tubular motor 50N:1.5M         |





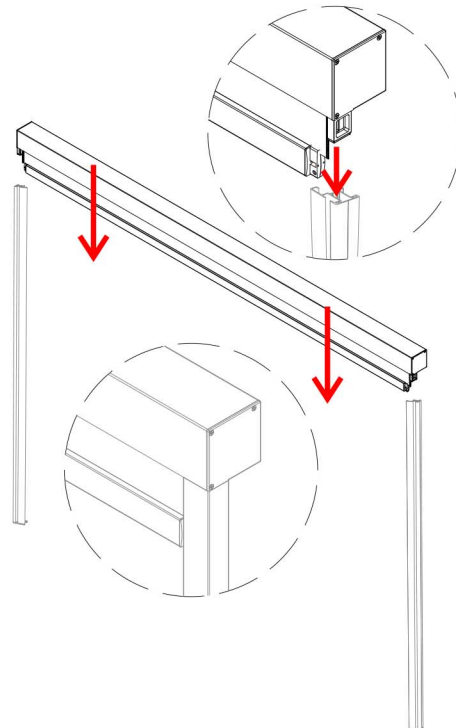
1

Divide the two side rails into:  
Side rail body, zipper guide rail, side rail cover;



2

The main body of the two side rails is  
inserted on the end cover;

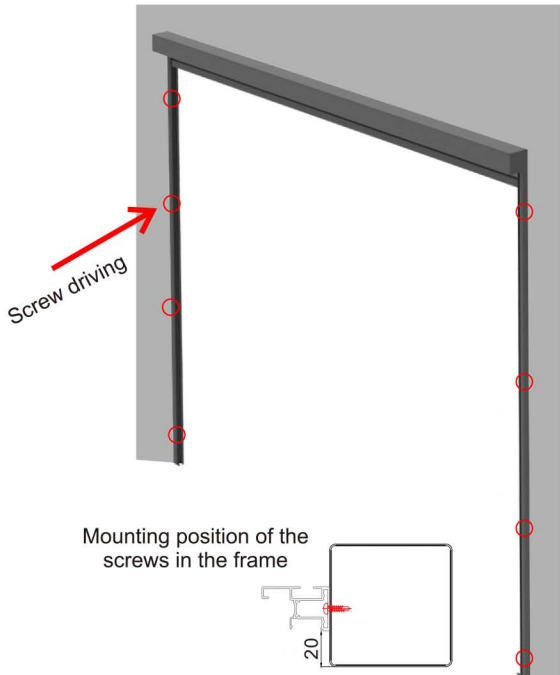


**3**

At the corresponding position of the side rail  
Make the installation holes;

**4**

Put the windproof Roller blind on the frame,  
Fasten with screws;

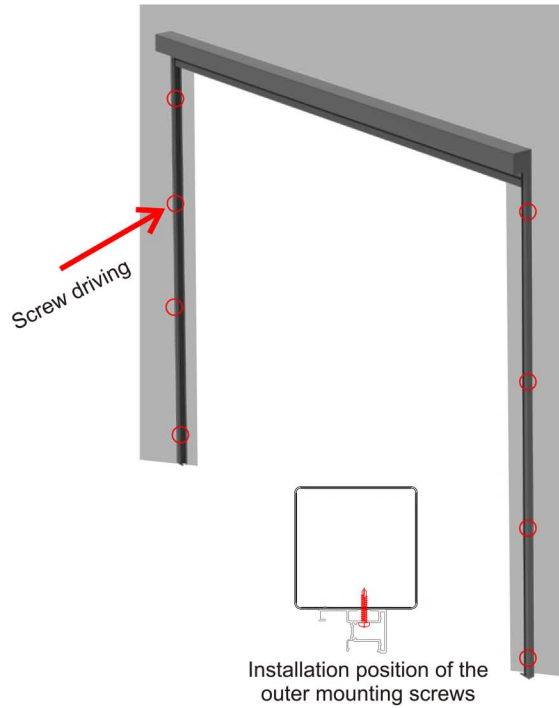


**5**

At the corresponding position of the side rail  
Make the installation holes;

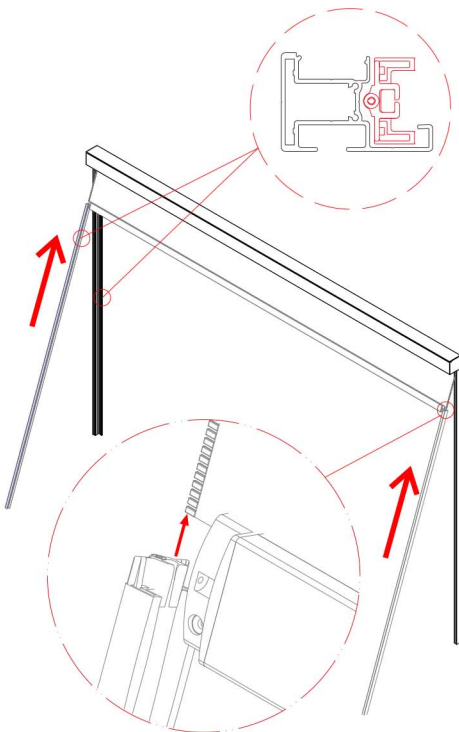
**6**

Put the windproof Roller blind on the frame,  
Fasten with screws;



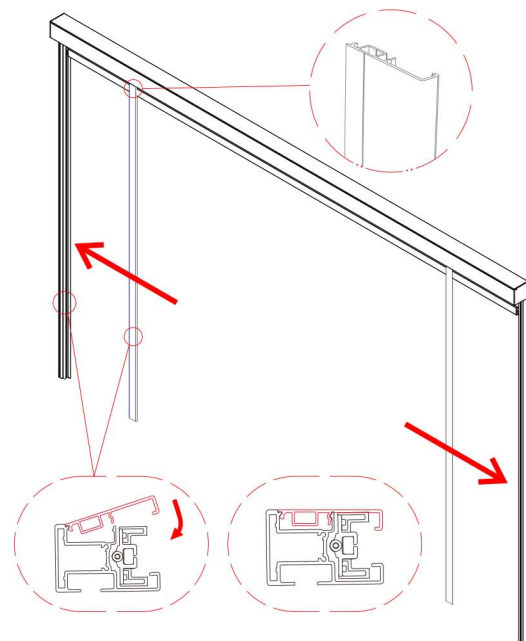
**7**

The zipper guide rail is installed in the side rail;  
Note: The fabric zipper must be inserted into the zipper rail



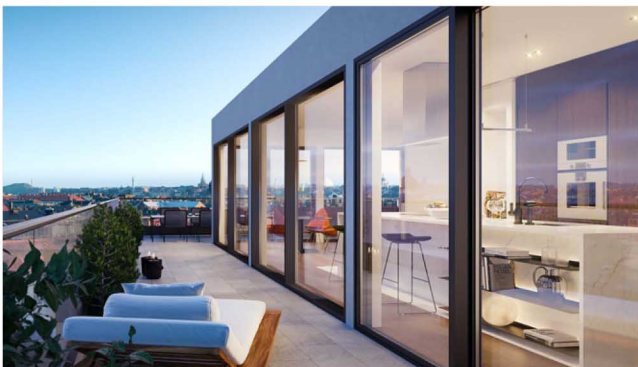
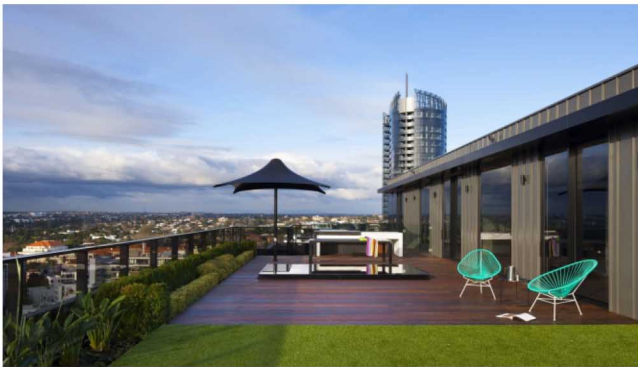
**8**

Cover the side rails on both sides with the cover,  
switch on the power supply roller blind flat lifting  
(i.e. installation is complete)



Windproof roller blind application real case







# SMART BALANCER

SMART BALANCER MAKES WINDPROOF  
ROLLER BLINDS MORE DURABLE