

The logo for KOPER, featuring the word "KOPER" in a sans-serif font. The letter "O" is blue, while the other letters are black. A small blue square with a white letter "k" is positioned to the right of the word.

KOPER.

**The future has  
dawned**

**CR2105** New concept

A white, modern door handle with a sleek, curved design. It features a long, thin grip and a small, rectangular push-button at the end. The handle is shown in two views: one floating in the air and another resting on a reflective surface. The background is a light gray gradient.

Ready product  
No measurement required

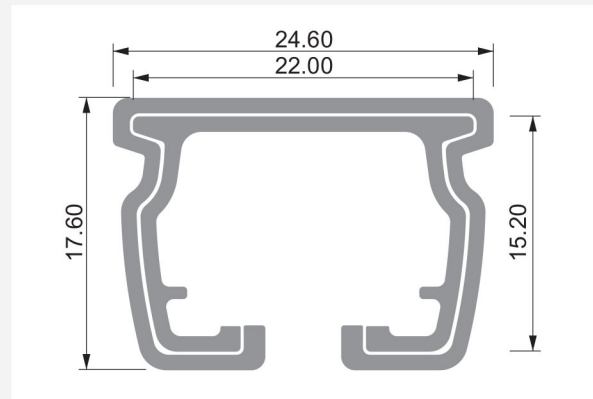
## High standard Metal:

Thickness: 1.00~1.20 ( $\pm 0.05$ mm)

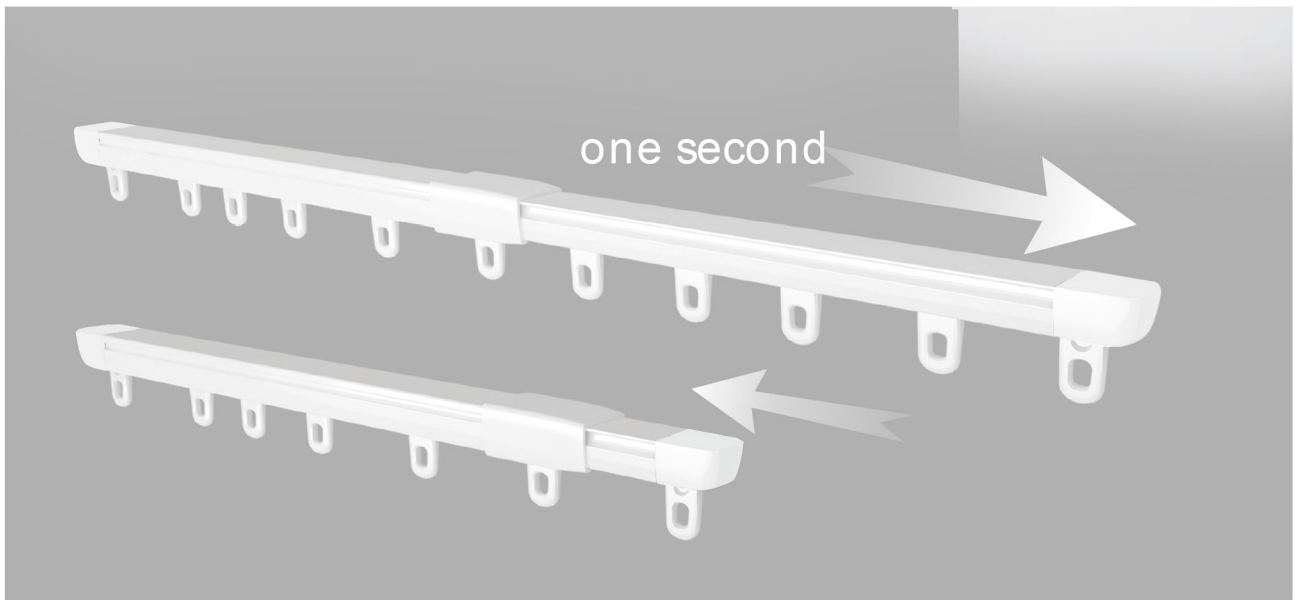
Dimension:

24.60X17.60 mm(outer)

22.00X15.20 mm(Inner)



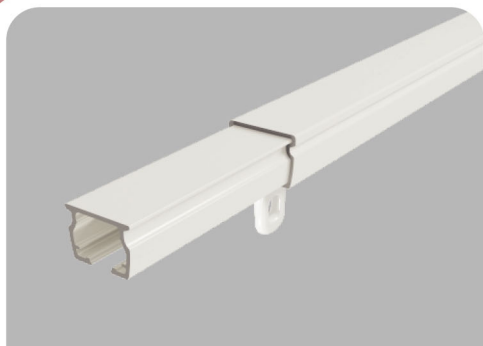
CR2105



## Accessories

<b>1500mm</b> -850mm R:14Pcs; B(A+B): 2+2 Pcs	<b>1800mm</b> -1000mm R:16Pcs; B(A+B): 2+2 Pcs	<b>2100mm</b> -1150mm R:20Pcs; B(A+B): 3+2 Pcs
<b>2400mm</b> -1300mm R:22Pcs; B(A+B): 3+2 Pcs	<b>2700mm</b> -1450mm R:26Pcs; B(A+B): 3+3 Pcs	<b>3000mm</b> -1600mm R:28Pcs; B(A+B): 4+3 Pcs
<b>3300mm</b> -1750mm R:30Pcs; B(A+B): 4+3 Pcs	<b>3600mm</b> -1900mm R:34Pcs; B(A+B): 4+4 Pcs	<b>3900mm</b> -2050mm R:36Pcs; B(A+B): 4+4 Pcs
<b>4200mm</b> -2200mm R:38Pcs; B(A+B): 4+4 Pcs	<b>4600mm</b> -2400mm R:42Pcs; B(A+B): 5+4 Pcs	

Runner: 9Pcs/meter    R=Runner; B=Bracket; B-A=Outer bracket; B-B=Inner bracket



## ◀ Track

Thickness:  $(1.25-1.10) \pm 0.05$  mm

Dimension:

24.60X17.60 mm (Outer track)

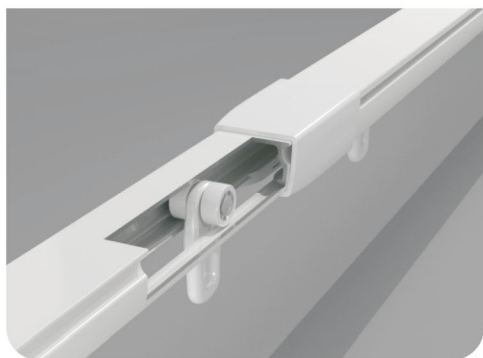
22.00X15.20 mm (Inner track)



## ◀ End cap

Sleek and stylish, the perfectly integrated concealed design complements the track, providing excellent protection against damage while remaining portable and easy to carry.

Color: White or Grey



## ◀ Joint

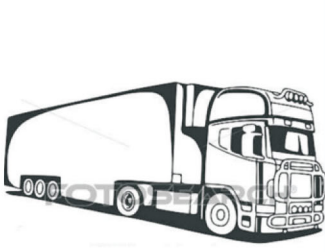
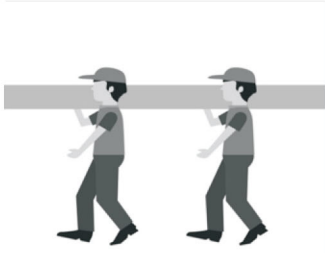
Made with specially modified materials, it exhibits superior wear resistance, outperforming nylon in terms of performance.



# Simplify Installation, Enhance Comfort

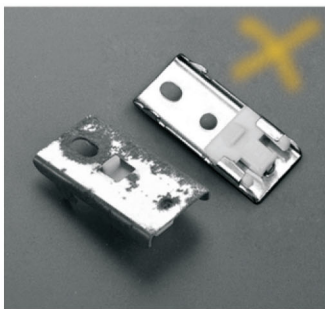
## Old System

## New System Benefits

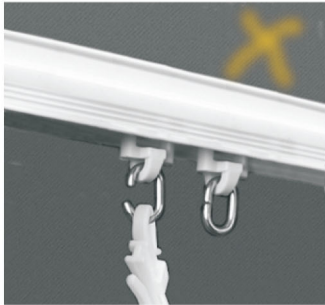


Individually Packaged  
Easily Managed by a Single Person  
Flexible Handling

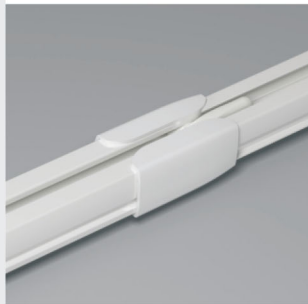
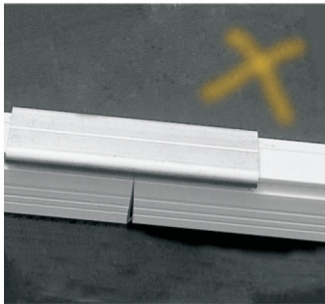
Optimal for Transportation  
Suitable for Regular Means of Transport  
Small Size after packing



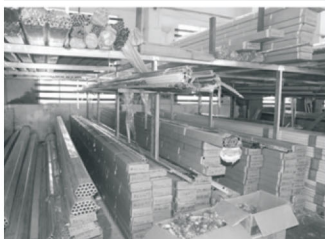
Dual Spring  
Installation Bracket Rust Prevention Assured  
Electroplated Prior to Powder Coating



Runner  
Safe Load Capacity 2.5kg  
Rivet: Alloy Aluminum  $\phi$ 2.6mm



Utilizing Specially Modified Materials  
Exceptional Wear Resistance  
Outperforms Nylon  
Adjustable Size  
Allow Measurement Discrepancy



No Cutting or Assembly Required  
Integrated Packaging  
Ready-to-Install Anytime  
Suitable for Compact Storage