

KOPER_k

SMART
COLLECTION

www.kopershades.com



KOPER_®

Composition	100% Polyester
Width	300cm
Weight	428 g/m ² ± 5%
Thickness	0.74 mm ± 5%
Color Fastness	6-7 Grade
Shading Effect	100%Blackout



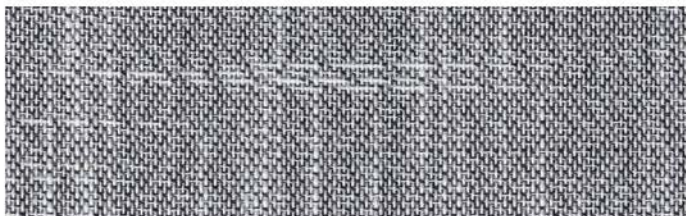
G100



G101



G102



G103



G104



G105



KOPER_n

Composition	100% Polyester
Width	300cm
Weight	400 g/m ² ± 5%
Thickness	0.60 mm ± 5%
Color Fastness	6-7 Grade
Shading Effect	Blackout



... ..



KOPER_n

Composition	100% Polyester
Width	300cm
Weight	330 g/m ² ± 5%
Thickness	0.50 mm ± 5%
Color Fastness	6-7 Grade
Shading Effect	Blackout



SHANTUNG1900

SHANTUNG 1901

SHANTUNG 1901

SHANTUNG 1902

SHANTUNG 1902

SHANTUNG 1903

SHANTUNG 1903



KOPER_n

Composition	100% Polyester
Width	300cm
Weight	330 g/m ² ± 5%
Thickness	0.50 mm ± 5%
Color Fastness	6-7 Grade
Shading Effect	Blackout



DA



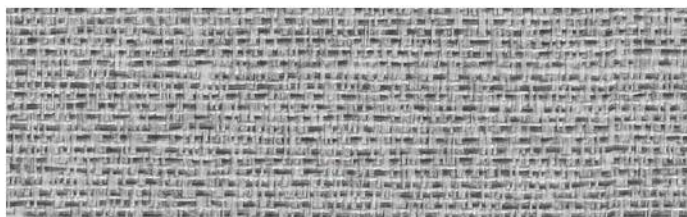
DA1



DA2



DA3



DA4

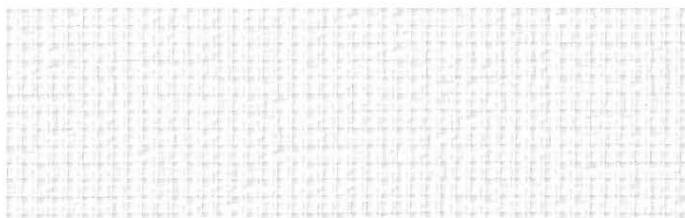


KOPER₁

Composition	100% Polyester
Width	300cm
Weight	364 g/m ² ± 5%
Thickness	0.53 mm ± 5%
Color Fastness	6-7 Grade
Shading Effect	Blackout



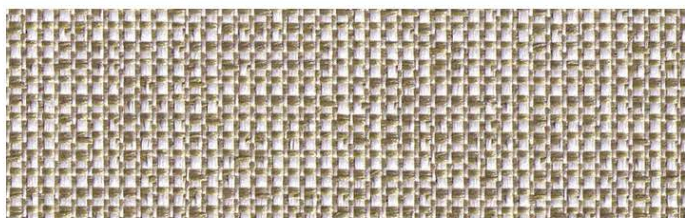
ME



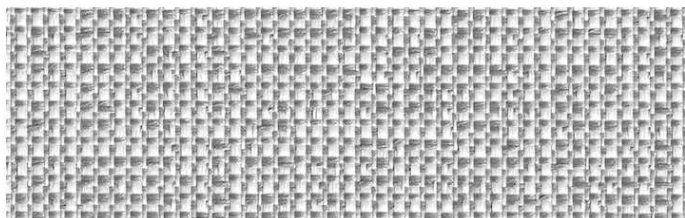
ME1



ME2



ME3



ME4

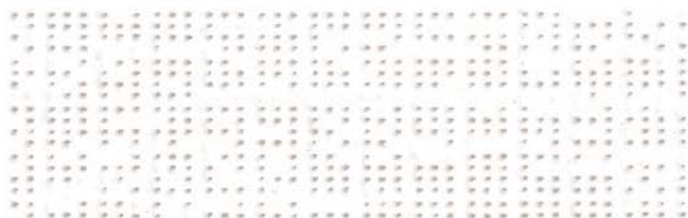


KOPER_®

Composition	40% PVC + 60% Polyester
Width	200 (customized) /250/300cm
Weight	440 g/m ² ± 5%
Openness factor	4%
Thickness	0.45mm ± 5%
Color Fastness	8 Grade
Tensile strength	Warp 3200N/5cm Weft 2000N/5cm
Tear strength	Warp 500N/5cm Weft 220N/5cm



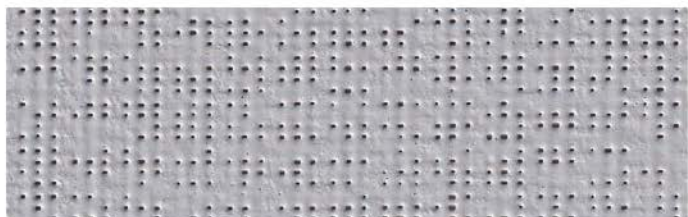
Y400



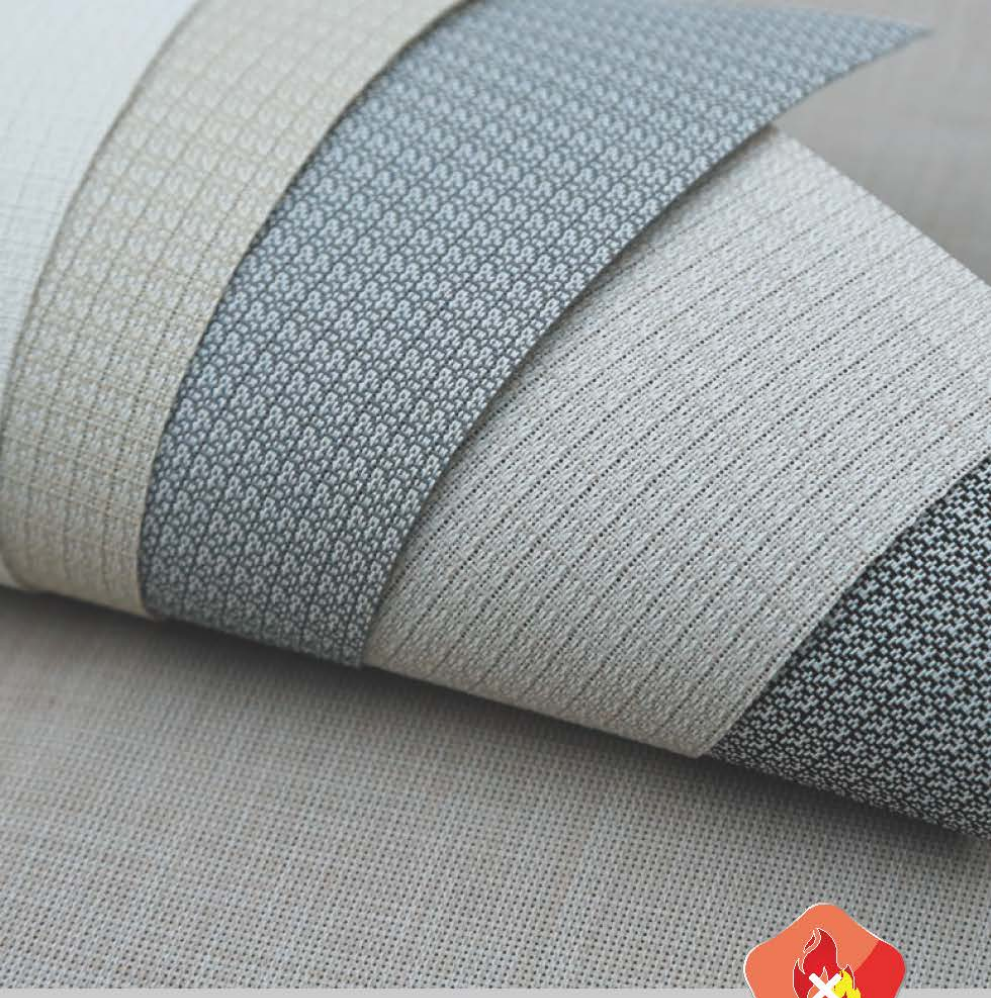
Y401



Y402



Y403

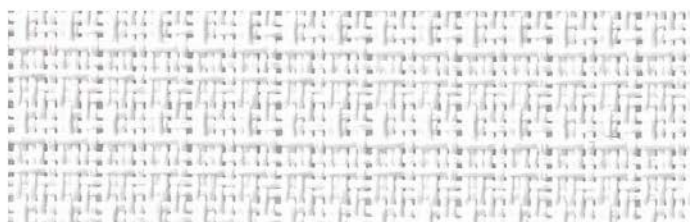


KOPER.

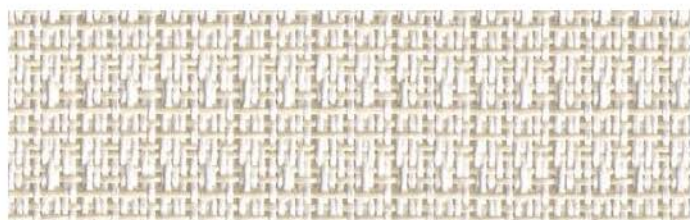
Composition	30% Polyester + 70% PVC
Width	200/250/300cm
Weight	390 g/m ² ± 5%
Openness factor	4%
Thickness	0.66mm ± 5%
Color Fastness	8 Grade
Yarn Count	50*40
Breaking strength	Warp 1450N/5cm Weft 970N/5cm



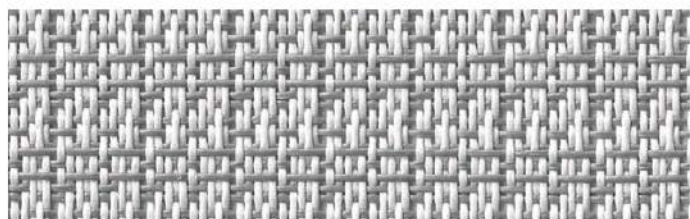
D400



D401



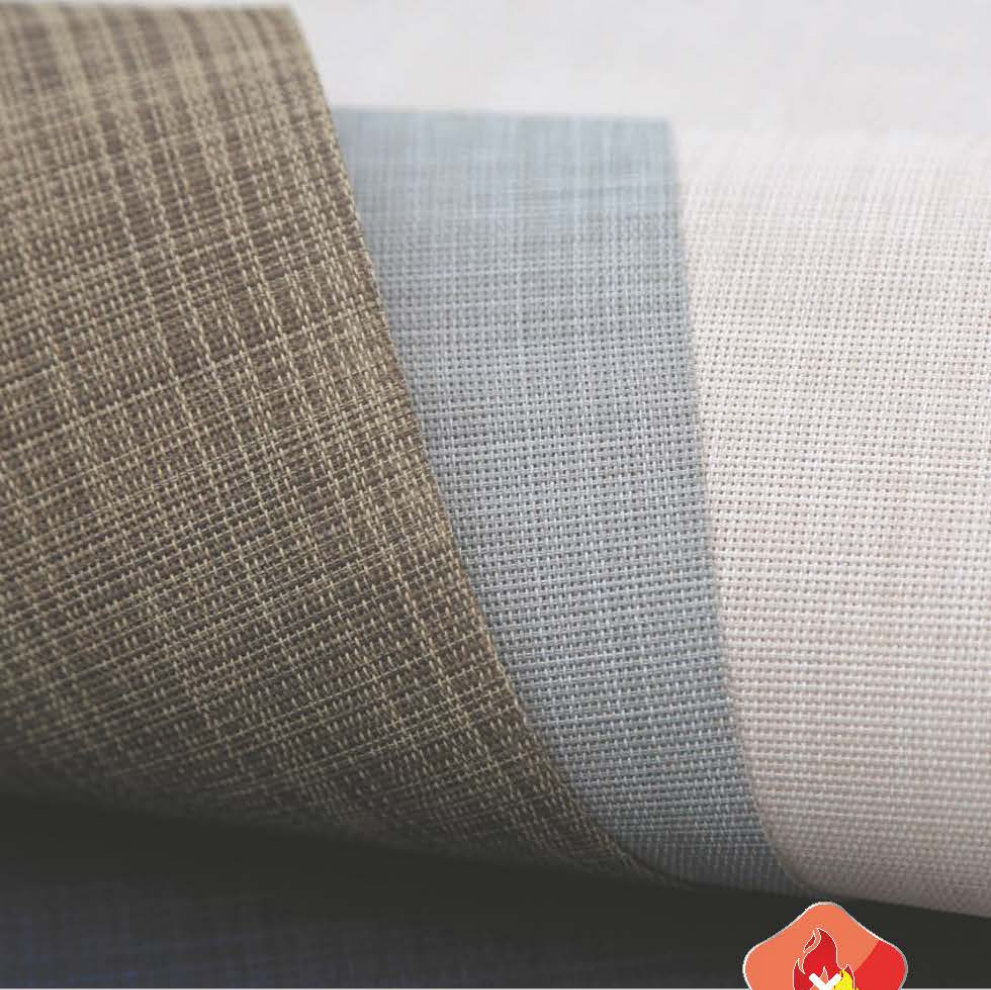
D402



D403



D404

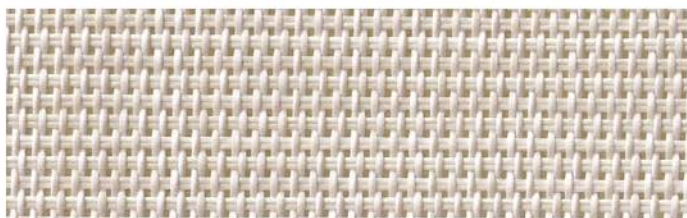


KOPER.

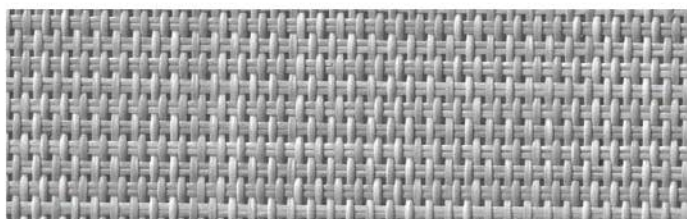
Composition	30% Polyester + 70% PVC
Width	250/300cm
Weight	434 g/m ² ± 5%
Openness factor	5%
Thickness	0.67mm ± 5%
Color Fastness	8 Grade
Yarn Count	48*46
Breaking strength	Warp 1310N/5cm Weft 1420N/5cm



L500



L501



L502

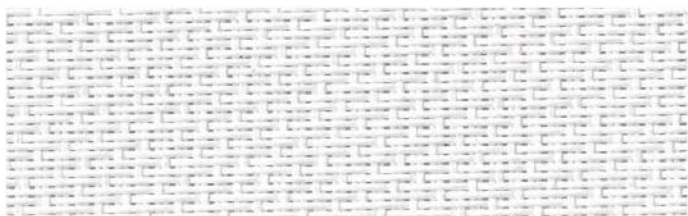


KOPER_®

Composition	30% Polyester + 70% PVC
Width	200/250/300cm
Weight	437 g/m ² ± 5%
Openness factor	3%
Thickness	0.66mm ± 5%
Color Fastness	8 Grade
Yarn Count	50*48
Breaking strength	Warp 1620N/5cm Weft 1600N/5cm



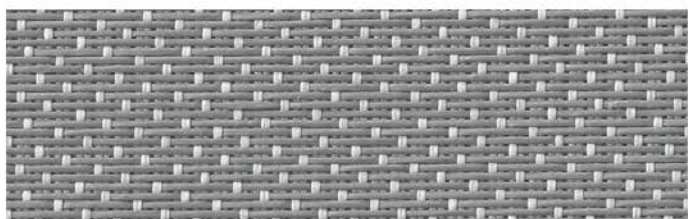
A300



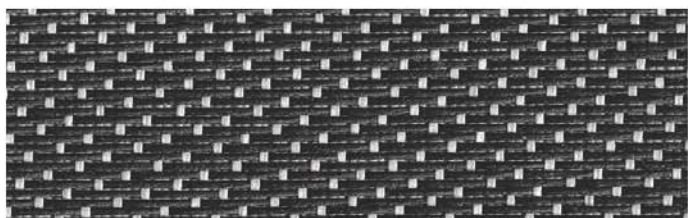
A301



A302



A303



A304



KOPER₁

Composition	30% Polyester + 70% PVC
Width	200/250/300/350cm
Weight	610 g/m ² ± 5%
Openness factor	0%
Thickness	0.82mm ± 5%
Color Fastness	8 Grade
Yarn Count	60*42
Breaking strength	Warp 3840N/5cm Weft 990N/5cm



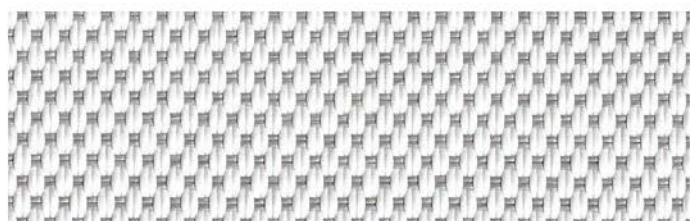
SC



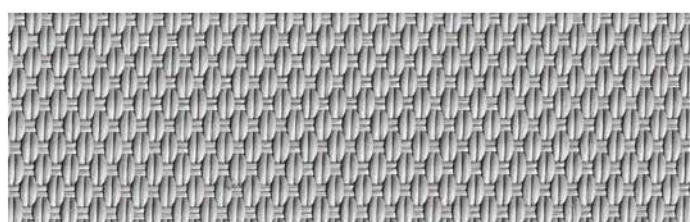
SC1



SC2



SC3



SC6



SC11

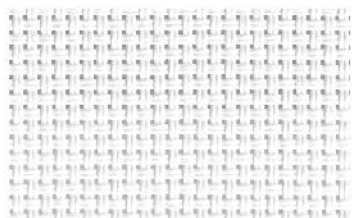


KOPER[®]

Composition	30% Polyester + 70% PVC
Width	200/250/300/350cm
Weight	514 g/m ² ± 5%
Openness factor	5%
Thickness	0.74mm ± 5%
Color Fastness	8 Grade
Yarn Count	36*36
Breaking strength	Warp 2233N/5cm Weft 2231N/5cm



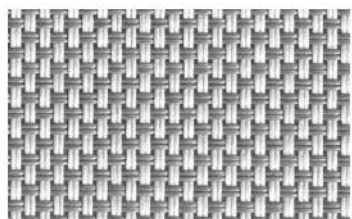
A500



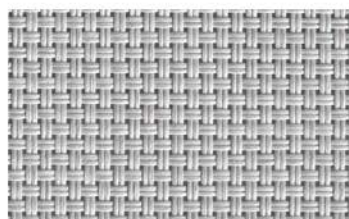
A501



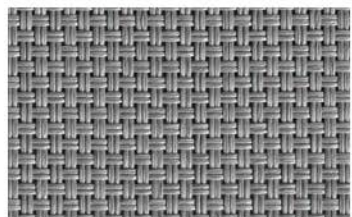
A502



A503



A505



A506



A511

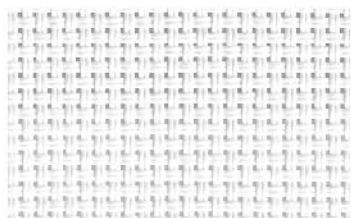


KOPER_®

Composition	30% Polyester + 70% PVC
Width	200/250/300/350cm
Weight	410 g/m ² ± 5%
Openness factor	5%
Thickness	0.55mm ± 5%
Color Fastness	8 Grade
Yarn Count	48*46
Breaking strength	Warp 1600N/5cm Weft 1500N/5cm



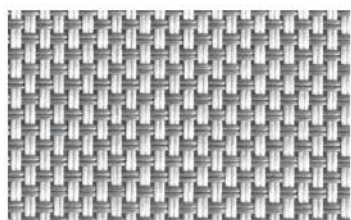
B500



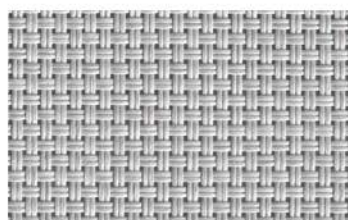
B501



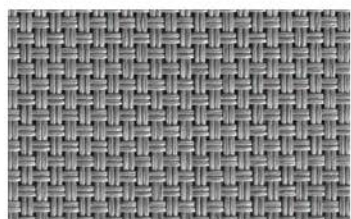
B502



B503



B505



B506



B511

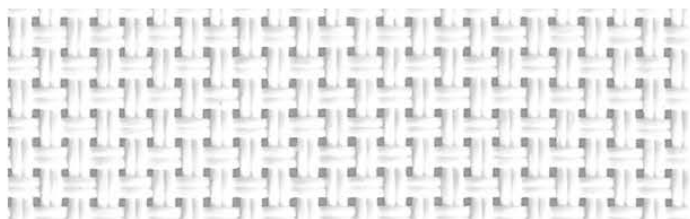


KOPER₃

Composition	30% Polyester + 70% PVC
Width	200/250/300/350cm
Weight	440 g/m ² ± 5%
Openness factor	3%
Thickness	0.65mm ± 5%
Color Fastness	8 Grade
Yarn Count	54*44
Breaking strength	Warp 1800N/5cm Weft 1434N/5cm



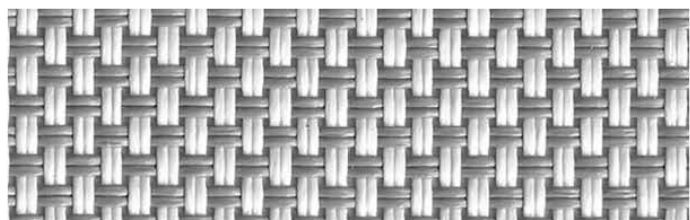
ALU



ALU-1



ALU-2



ALU-3

KOPER.®

www.kopershades.com